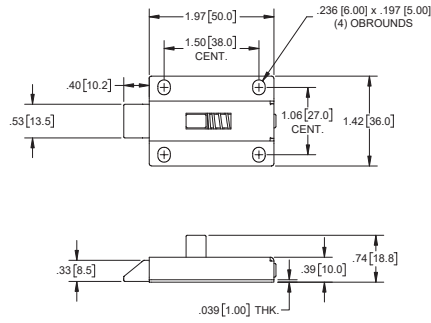
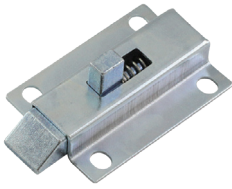


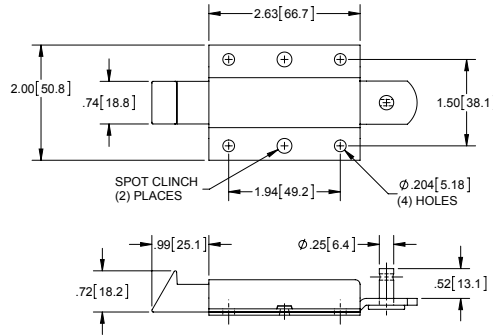
Slam Latch



Part Number	Material	Finish
119102ZN	steel	zinc plated

▶ die cast steel bolt

Slam Latches

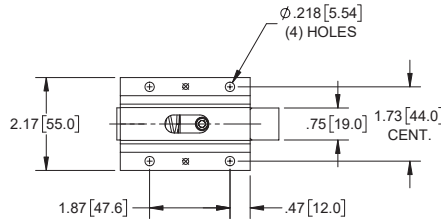


Part Number	Material	Finish
1194	steel	zinc plated
1194-01	steel	zinc plated

▶ die cast zinc strike

▶ part no. 1194-01 has 1/2 the spring tension as the 1194.

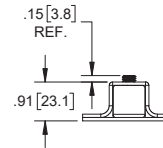
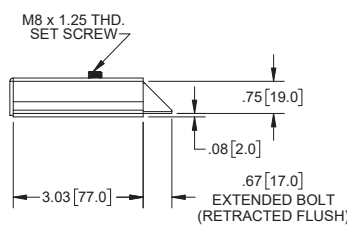
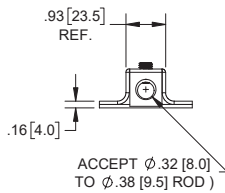
Slam Latch



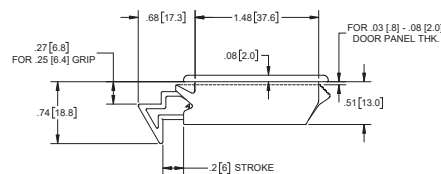
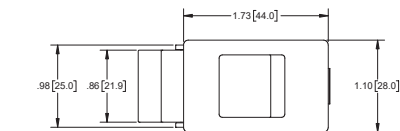
Part Number	Material	Finish
1194-10	steel	zinc plated

▶ die cast zinc strike

▶ fits rod of up to Ø 3/8"; see pages 63 and 135 for 8mm rods & 228 for 9mm rods



Spring Loaded Plastic Slide Latch



Part Number	Material	Finish
1134P	plastic	black textured

▶ spring material: 304SS

▶ part installs by pushing through cut-out and snapping into place

▶ applicable material thickness: .03[.8] - .09[2.3]

