

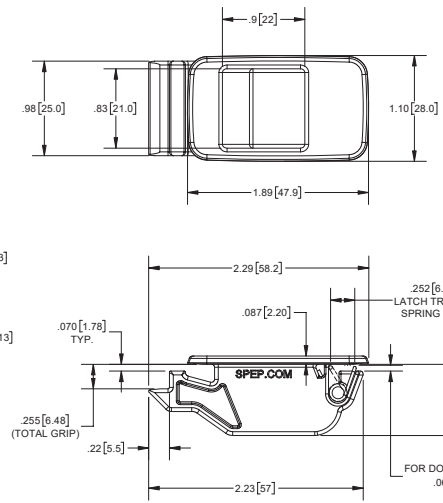
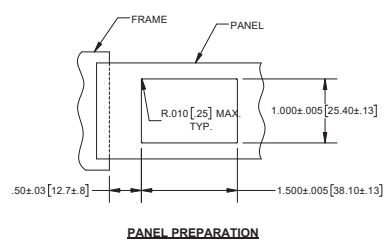
NEW

UV

Small Plastic Push-to-Close Slide Latch

Part Number	Material	Finish
1134P-40	plastic	black, lightly textured

- ▶ spring: passivated, stainless steel
- ▶ part installs by pushing through cut-out and snapping into place
- ▶ applicable material thickness: $.060 \pm .005$ [1.52 ± .13]



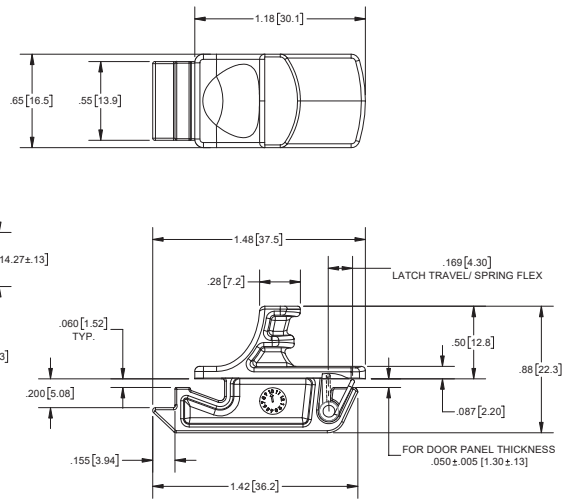
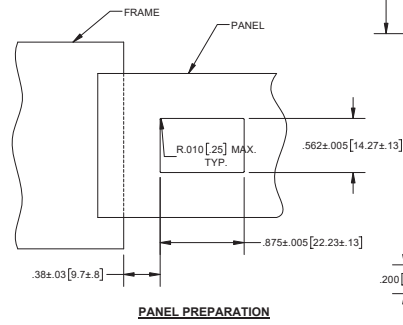
NEW

UV

Small Plastic Push-to-Close Slide Latch

Part Number	Material	Finish
1134P-60	plastic	black, lightly textured

- ▶ spring: passivated, stainless steel
- ▶ part installs by pushing through cut-out and snapping into place
- ▶ applicable material thickness: $.050 \pm .005$ [1.30 ± .13]



NEW

UV

Large Plastic Push-to-Close Slide Latch

Part Number	Material	Finish
1134P-80	plastic	black, lightly textured

- ▶ spring: passivated, stainless steel
- ▶ part installs by pushing through cut-out and snapping into place
- ▶ applicable material thickness: $.090 \pm .005$ [2.29 ± .13]

