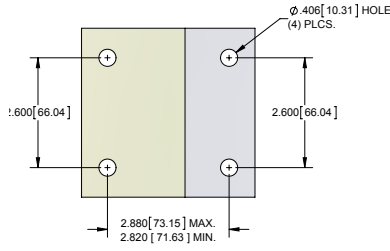
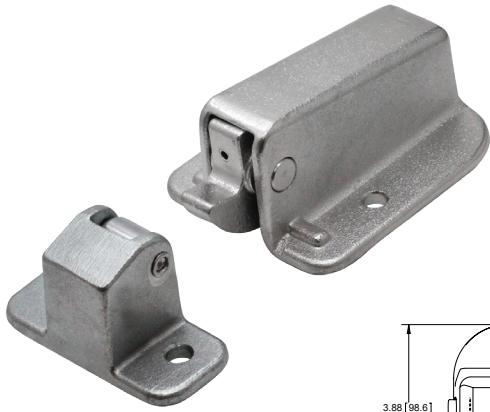
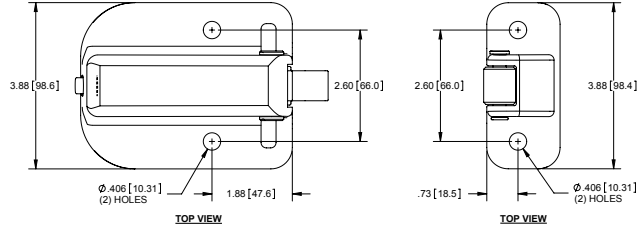


Large Explosion Venting Latch

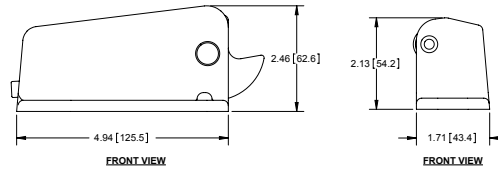


MOUNTING DIMENSIONS



TOP VIEW

TOP VIEW



FRONT VIEW

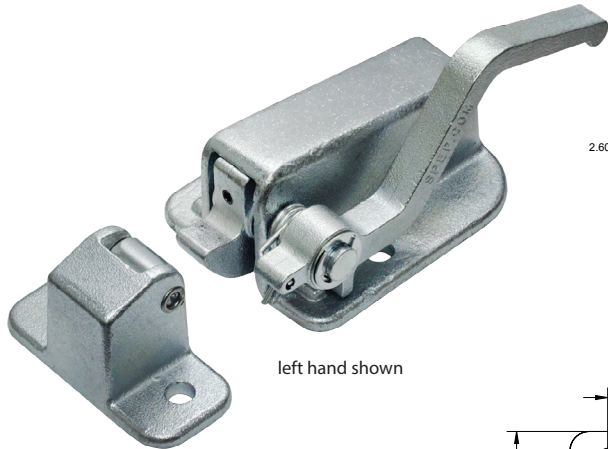
FRONT VIEW

Part Number	Material	Finish
176	cast iron housing	zinc plated

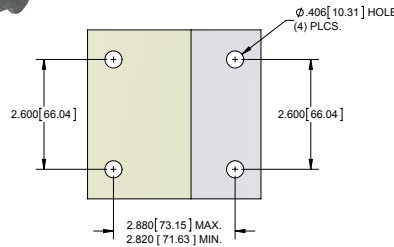
- ▶ hex screw on back for latch tension adjustment
- ▶ adjustable release force: 43 - 180 lbs.

See our industrial pulls on pages 23 & 24.

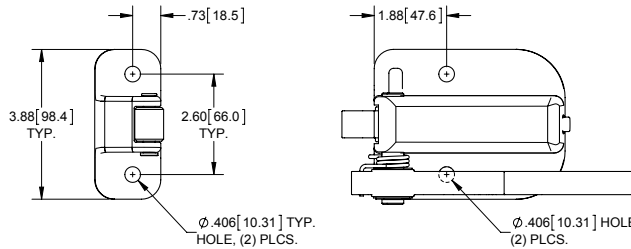
Large Explosion Venting Latch with Handle



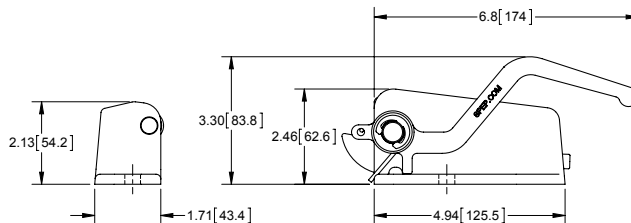
left hand shown



MOUNTING DIMENSIONS



TOP VIEW



FRONT VIEW

Part No.	Handle	Material	Finish
176-01	left hand	cast iron housing	zinc plated
176-02	right hand	cast iron housing	zinc plated

- ▶ hex screw on back for latch tension adjustment
- ▶ adjustable release force: 43 - 180 lbs.
- ▶ shims available