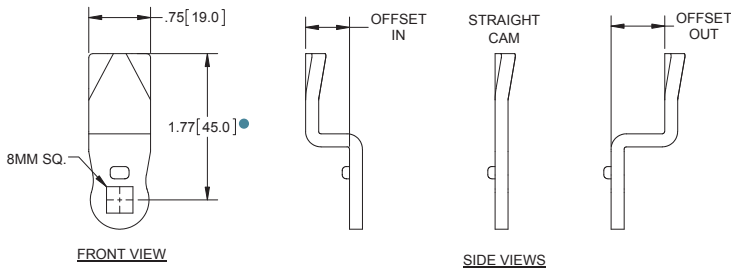
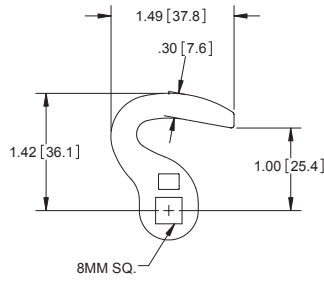


Quarter-turn Latch Cams

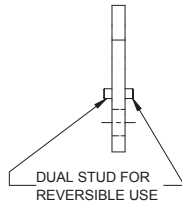


FRONT VIEW

SIDE VIEWS

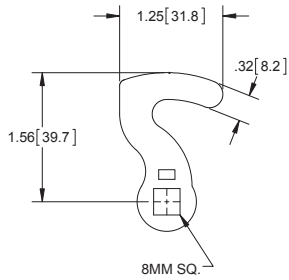


FRONT VIEW

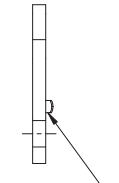


RIGHT SIDE VIEW

part no. **12C9-01**

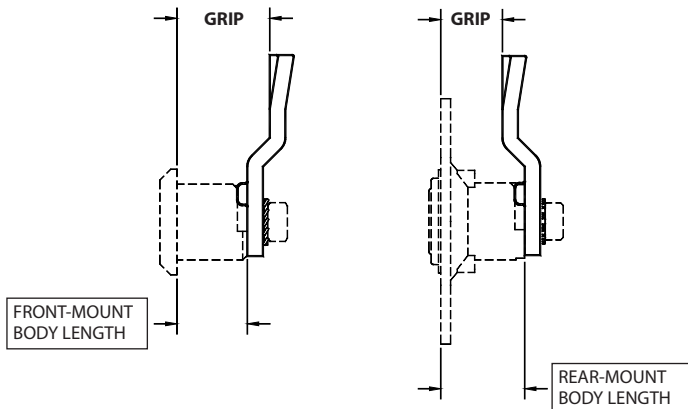


FRONT VIEW



RIGHT SIDE VIEW

part no. **12C9**



Grip *	Steel Part No.	304SS Part No.	Cam Offset
.138 [3.50]	12C1	12C15S	.551 [14.00] in
.157 [4.00]	12C15	12C15SS	.531 [13.50] in
.236 [6.00]	12C16	12C16SS	.453 [11.50] in
.315 [8.00]	12C17	12C17SS	.374 [9.50] in
.394 [10.00]	12C18	12C18SS	.295 [7.50] in
.512 [13.00]	12C19	12C19SS	.177 [4.50] in
.551 [14.00]	12C10	12C10SS	.138 [3.50] in
.630 [16.00]	12C20	12C20SS	.059 [1.50] in
.689 [17.50]	12C4	12C4SS ♦	straight
.689 [17.50]	12C8 ●	12C8SS ●	straight
.689 [17.50]	12C9	N/A	straight, hooked (see illustration)
.689 [17.50]	12C9-01 ●	N/A	straight, hooked (see illustration)
.748 [19.00]	12C5	12C5SS	.059 [1.50] out
.768 [19.50]	12C2	12C2SS	.079 [2.00] out
.787 [20.00]	12C22	12C22SS	.098 [2.50] out
.866 [22.00]	12C6	12C6SS	.177 [4.50] out
.945 [24.00]	12C23	12C23SS	.256 [6.50] out
.984 [25.00]	12C24	12C24SS	.295 [7.50] out
1.024 [26.00]	12C11	12C11SS	.334 [8.50] out
1.102 [28.00]	12C25	12C25SS	.413 [10.50] out
1.142 [29.00]	12C7	12C7SS	.453 [11.50] out
1.161 [29.50]	12C37	12C37SS	.472 [12.00] out
1.181 [30.00]	12C26	12C26SS	.492 [12.50] out
1.220 [31.00]	12C3	12C3SS	.531 [13.50] out
1.260 [32.00]	12C27	12C27SS	.571 [14.50] out
1.339 [34.00]	12C13	12C13SS	.649 [16.50] out
1.378 [35.00]	12C28	12C28SS	.689 [17.50] out
1.417 [36.00]	12C29	12C29SS	.728 [18.50] out
1.457 [37.00]	12C12	12C12SS	.768 [19.50] out
1.496 [38.00]	12C30	12C30SS	.807 [20.50] out
1.575 [40.00]	12C31	12C31SS	.886 [22.50] out
1.654 [42.00]	12C32	12C32SS	.964 [24.50] out
1.732 [44.00]	12C33	12C33SS	1.043 [26.50] out
1.772 [45.00]	12C34	12C34SS	1.083 [27.50] out
1.850 [47.00]	12C35	12C35SS	1.161 [29.50] out
1.969 [50.00]	12C36	12C36SS	1.280 [32.50] out

- part no. **12C8** is 1.26 [32.0] long; all other cams are 1.77 [45.0]
- part no. **12C9-01** has stud on both sides as illustrated NEW!
- ♦ available with longer length of 2.50 [63.5] as part no. **12C4SS-01**
- ▶ steel parts are zinc plated & 304SS parts are passivated
- ▶ * grips shown are for latches with .69 [17.5] body length on pages 110 - 113 (see body length table below for other latch body lengths)
- ▶ three-point cams are available on pg. 127

Body Length	Dimension to Add for Correct Grip
.69 [17.5]	same as grips on cam table
.71 [18.0]	add .02 [.50] to grips on cam table
.75 [19.1]	add .06 [1.60] to grips on cam table
.88 [22.4]	add .19 [4.90] to grips on cam table
1.18 [30.0]	add .49 [12.50] to grips on cam table
1.97 [50.0]	add 1.28 [32.50] to grips on cam table