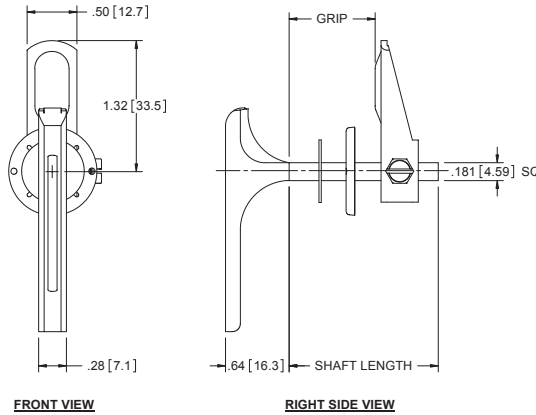


Steel L-Handle Turn Latches

Part Number	Shaft Length	Max Grip
12ZN	1.50 [38.1]	1.00 [25.40]
12ZN-01	1.75 [44.5]	1.25 [31.8]
12ZN-02	2.25 [57.2]	1.75 [44.5]

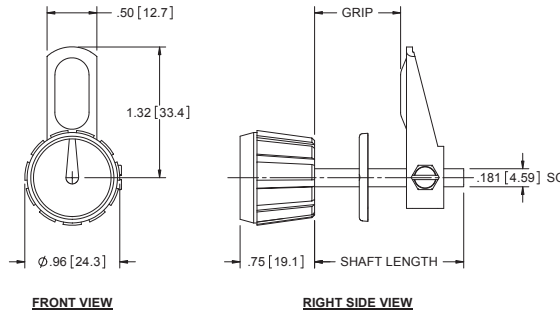
- ▶ material: steel
- ▶ handle finish: bright nickel plated
- ▶ includes:
 - ▶ handle bolt
 - ▶ push-on nut, clear zinc plated
 - ▶ single point cam, clear zinc plated
 - ▶ trim washer, bright nickel plated



Plastic Knob Handle Turn Latches

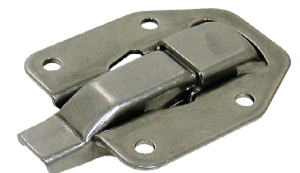
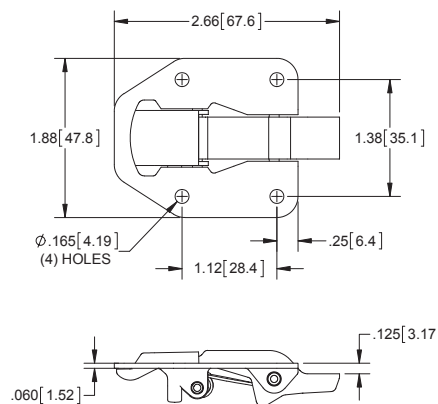
Part Number	Shaft Length	Max Grip
13ZN	1.00 [25.4]	0.50 [12.7]
13ZN-01	1.50 [38.1]	1.00 [25.4]
13ZN-02	2.25 [57.2]	1.75 [44.5]

- ▶ material: steel with plastic knob
- ▶ shaft finish: bright nickel plated
- ▶ includes:
 - ▶ knob bolt
 - ▶ steel push-on nut, clear zinc plated
 - ▶ single point cam, clear zinc plated

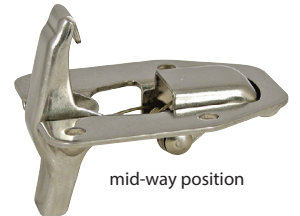


Flush-mount Spring Loaded Latch for Access Panel

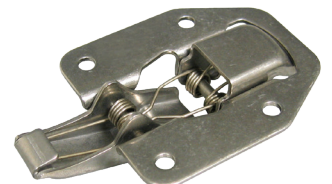
Part Number	Material	Finish
2196	304SS	tumbled



closed position



mid-way position



open position