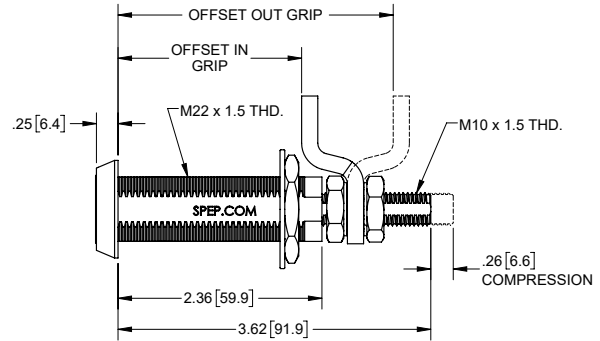
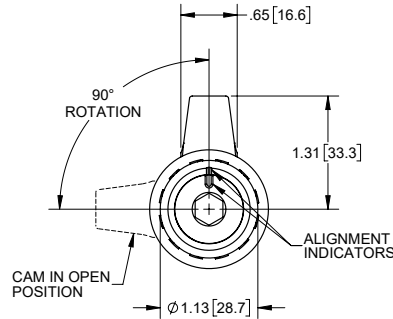
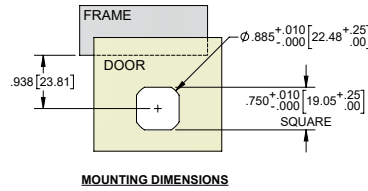




Compression Latches with Long Body

Part Numbers	Grip Range			
	Cam Offset In		Cam Offset Out	
	Min.	Max.	Min.	Max.
4-53BK15	1.55 [39.4]	2.17 [55.1]	2.61 [66.3]	3.23 [82.0]
4-53BK10	2.10 [53.3]	2.72 [69.1]	3.16 [80.3]	3.78 [96.0]
4-53BK05	2.63 [66.8]	3.25 [82.6]	3.69 [93.7]	4.31 [109.5]

- ▶ die cast zinc
- ▶ finish: black powder coated
- ▶ grip range shown is in locked position
- ▶ achieves NEMA type 4, 12 and IP65 when used with **X174-01** gasket (sold separately)
- ▶ 1.38 [35.0] O.D. x .125 [28.58] thick steel, zinc plated spacer (sold separately as part no. **KH45**)



Large Compression Latches Accessories

Spacer

Part Number	Material	Finish
KH45	steel	zinc plated

- ▶ used with parts on pages 157 - 159

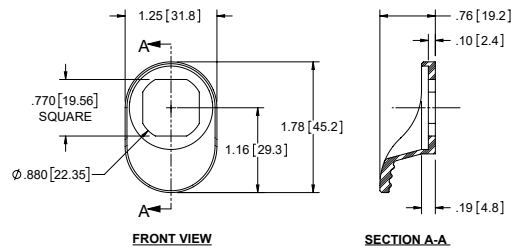


Black Finger Pull



Part Number	Material	Finish
KH38BK	thermoplastic with UV stabilizers	textured

- ▶ will shorten cam grip by .10" when you use this part
- ▶ used with parts on pages 157 - 159



Padlock Cups

Part Number	Material	Finish
KH30BK	steel	black powder coated
KH30SS	304SS	passivated

- ▶ accepts \varnothing .375 (3/8) padlock
- ▶ will shorten cam grip by .08" when you use this part
- ▶ used with parts on pages 157 - 159
- ▶ will not work with part numbers **4-10BK**, **4-11BK**, and **4-12BK**

