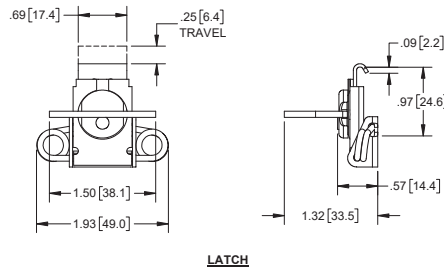
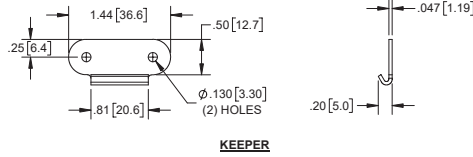
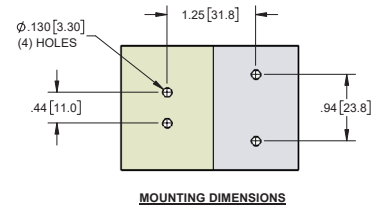


Small Spring Loaded Twist Latches

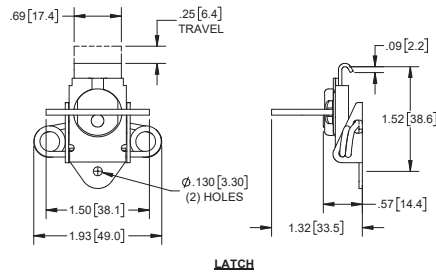
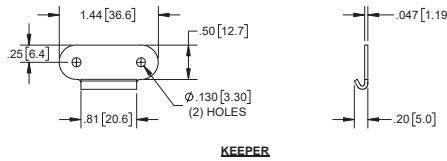


Part Number	Description	Material	Finish
2093	latch	steel	zinc plated
209103	keeper	steel	zinc plated
209302	polybagged	steel	zinc plated

- ▶ polybagged part number contains one latch and one keeper per sealed polybag.
- ▶ the spring compensates for up to .156 [4.00] misalignment

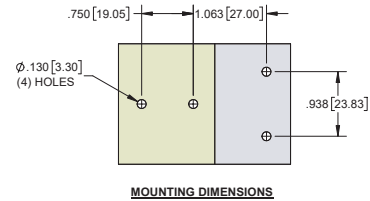


Small Spring Loaded Twist Latches with Tri-shaped Base

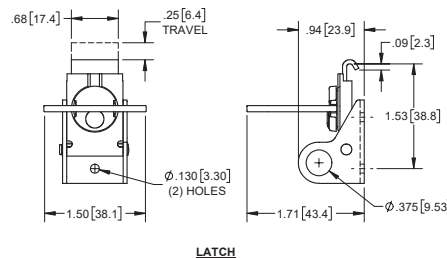
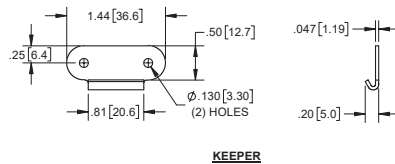


Part Number	Description	Material	Finish
209303	latch	steel	zinc plated
209103	keeper	steel	zinc plated
209303BK	latch	steel	black e-coat
209303SS	latch	300 series stainless steel	tumbled
209103SS	keeper	304SS	tumbled
209304	polybagged	steel	zinc plated

- ▶ polybagged part number contains one latch and one keeper per sealed polybag
- ▶ the spring compensates for up to .156 [4.00] misalignment

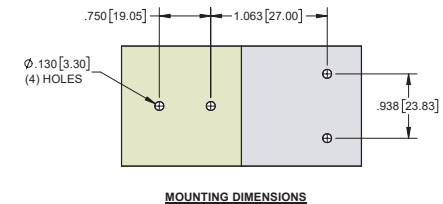


Small Padlocking Twist Latches

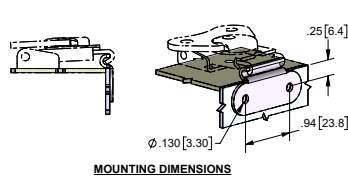
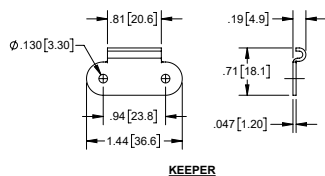


Part Number	Description	Material	Finish
2091LK	latch	steel	zinc plated
209103	keeper	steel	zinc plated
2091LKSS-L	latch	300 series stainless steel	tumbled
209103SS	keeper	304SS	tumbled
2091LKSS01*	latch & keeper	300 series stainless steel	tumbled

- ▶ *holes on latch and keeper are Ø.193 instead of Ø.130



90° Angle Keeper for Small Twist Latches



Part Number	Material	Finish
209107	steel	zinc plated
209107SS	304SS	tumbled

- ▶ mounted perpendicular to latch