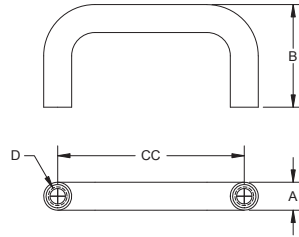


Stainless Steel Wire Pulls



Part Number	CC	A	B	D
9035SS-01	.787 [20.00]	Ø.157 [4.00]	.86 [22.0]	M2.6 THD.
9035SS-02	1.574 [40.00]	Ø.236 [6.00]	.86 [22.0]	M4 THD.
9035SS-04	3.149 [80.00]	Ø.236 [6.00]	1.18 [30.0]	M4 THD.

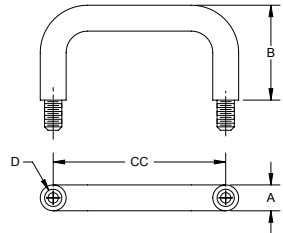
▶ material: 303SS
▶ finish: polished

Pull Bases

Part Number: 9035SS-01W
For Ø.157 [4.00] Pull

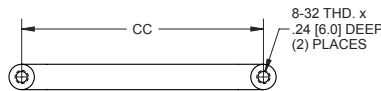
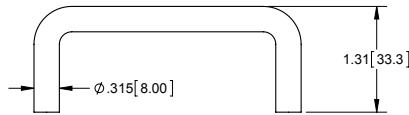


Part Number: 9035SS-02W
For Ø.236 [6.00] Pull



Part Number	CC	A	B	D
9036SS-01	.787 [20.00]	Ø.157 [4.00]	.86 [22.0]	M2.6 THD.
9036SS-02	1.574 [40.00]	Ø.236 [6.00]	.86 [22.0]	M4 THD.
9036SS-04	3.149 [80.00]	Ø.236 [6.00]	1.18 [30.0]	M4 THD.

Brass Wire Pulls



Brass Wire Pulls

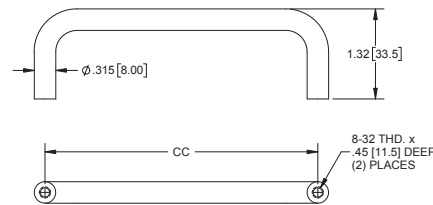
Part Number	CC	Material	Finish
951	3.00 [76.2]	solid brass	polished & lacquered
941 ‡	3.50 [88.9]	solid brass	
948	4.00 [101.6]	solid brass	

‡ non-stock

Chrome Plated Wire Pulls

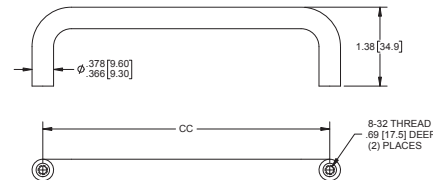
Part Number	CC	Material	Finish
952	3.00 [76.2]	solid brass	chrome plated
940	3.50 [88.9]	solid brass	
944	4.00 [101.6]	solid brass	

Satin Aluminum Wire Pulls



Part Number	CC	Material	Finish
953	3.00 [76.2]	aluminum	satin aluminum
942	3.50 [88.9]	aluminum	
946	4.00 [101.6]	aluminum	

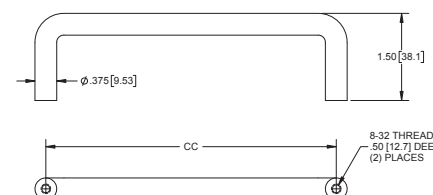
Satin White Aluminum Wire Pulls



Part Number	CC	Material	Finish
939	5.00 [127.0]	aluminum	satin white anodized
939-01 ‡	8.84 [224.5]	aluminum	anodized

‡ non-stock

Tall Brass Wire Pull



Part Number	CC	Material	Finish
954-01 ‡	5.00 [127.0]	solid brass	polished chrome plated

‡ non-stock