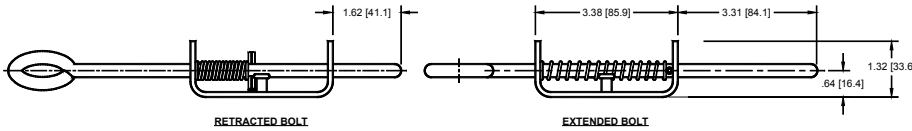
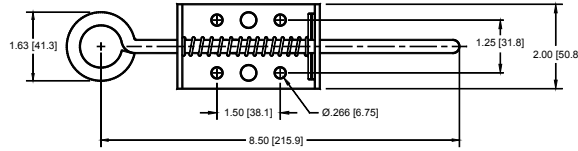


### Bolt Latch with Stop Pin



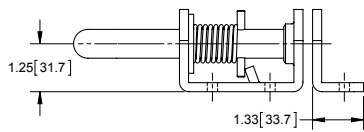
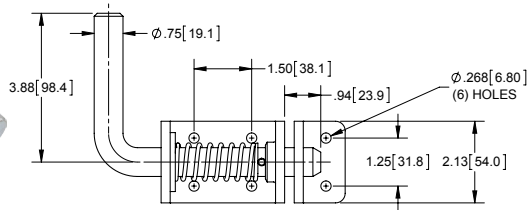
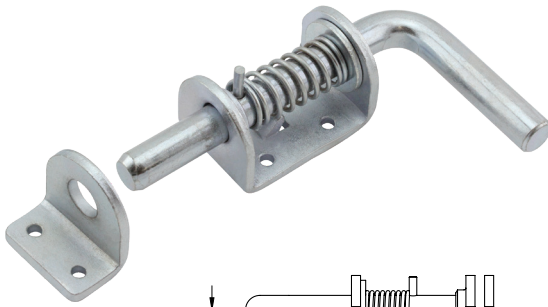
RETRACTED BOLT

EXTENDED BOLT

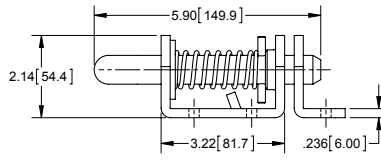
Part Number	Material	Finish
1184ZN	steel	zinc plated

▶  $\varnothing$ .313 [7.95] bolt

### Bolt Latch with Keeper



RETRACTED BOLT

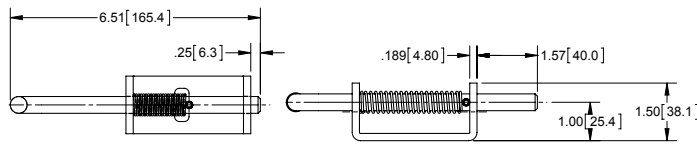
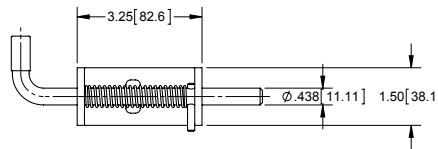


EXTENDED BOLT

Part Number	Material	Finish
1260ZN	steel	zinc plated

▶  $\varnothing$ .750 [19.05] steel bolt

### Aluminum Bolt Latch with Stop Pin



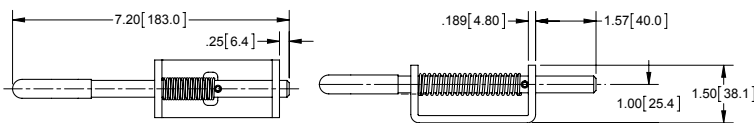
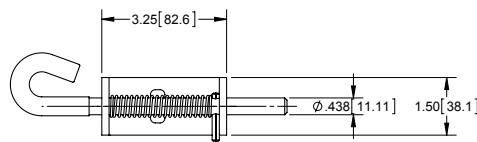
RETRACTED BOLT

EXTENDED BOLT

Part Number	Material	Finish
1181A	aluminum	mill

▶  $\varnothing$ .438 [11.13] 304SS bolt

### Aluminum Bolt Latch with Hook Pull and Stop Pin



RETRACTED BOLT

EXTENDED BOLT

Part Number	Material	Finish
1181A-01	aluminum	mill

▶  $\varnothing$ .438 [11.13] 304SS bolt