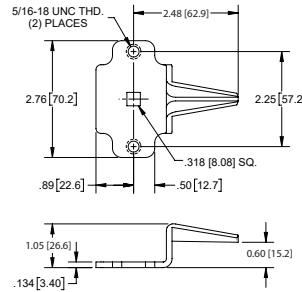


Three Point Cabinet Latches with Channel Rods

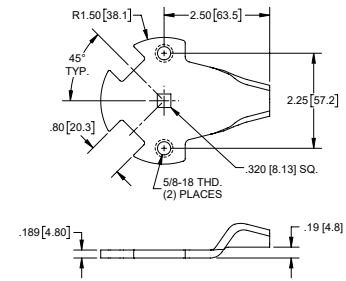
Build Your Own Cabinet Latch Kit

707 - A - 704-36.00 → **Example Part No.**

- rod part numbers (2 pcs.) (see channel rod options below)
- cam style
- base part number includes:
 - **702** rod guide bracket (2pcs.)
 - **703** 5/16-18 shoulder bolt (2pcs.)



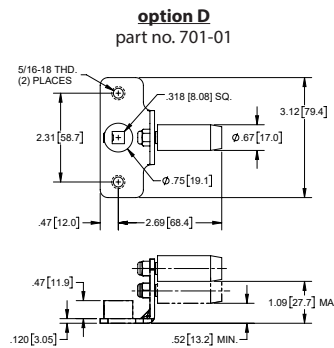
option A
part no. 700



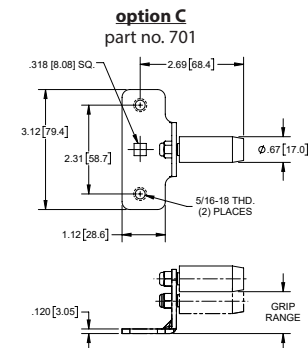
option B
part no. 700-01

Center Cam Options		
Options	Part No.	Description
A	700	.60 [15.2] offset center cam
B	700-01	.187 [4.75] offset center cam
C	701	adjustable nylon roller center cam
D	701-01	adjustable nylon roller center cam with weld collar

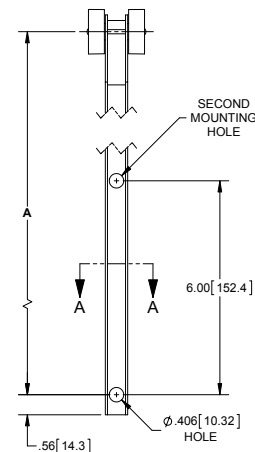
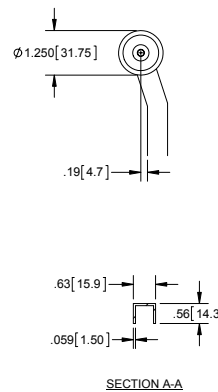
Channel Rod Options	
Part No.	Dimension A
704*	36.00 [914.4]
704-24.20*	24.20 [614.9]
705*	47.44 [1205.0]
705-01*	37.08 [941.8]
705-02*	41.70 [1059.2]
705-05	9.88 [251.0]
705-06	12.88 [327.2]
705-07	15.88 [403.4]
705-08	18.88 [479.6]
705-09	22.00 [558.8]
705-10	21.88 [555.8]
705-11	18.25 [463.6]
705-12	24.88 [632.0]
705-13	27.50 [698.5]
705-14	27.88 [708.2]
705-15	33.50 [850.9]
705-16	33.88 [860.6]
705-17	45.50 [1155.7]
705-18	38.72 [983.5]
705-22	23.88 [606.6]
705-23	11.38 [289.1]
705-24	12.94 [328.7]
705-25	15.94 [404.9]
705-26	7.88 [200.2]
705-27	38.88 [987.6]
705-28	29.88 [759.0]



option D
part no. 701-01



option C
part no. 701



- ▶ * these parts have second mounting hole
- ▶ easy installation
- ▶ high impact plastic rollers for smooth operation
- ▶ made of strong lightweight channel steel with a clear zinc plated finish
- ▶ rods can be made to custom lengths and hole patterns if order volume is sufficient