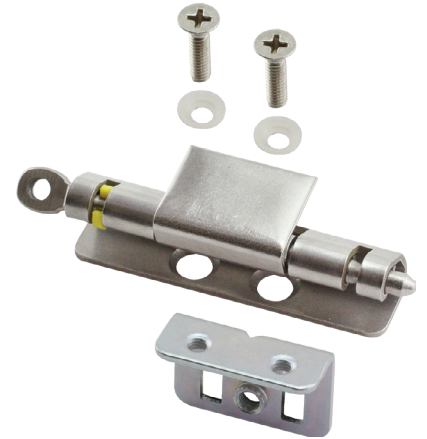
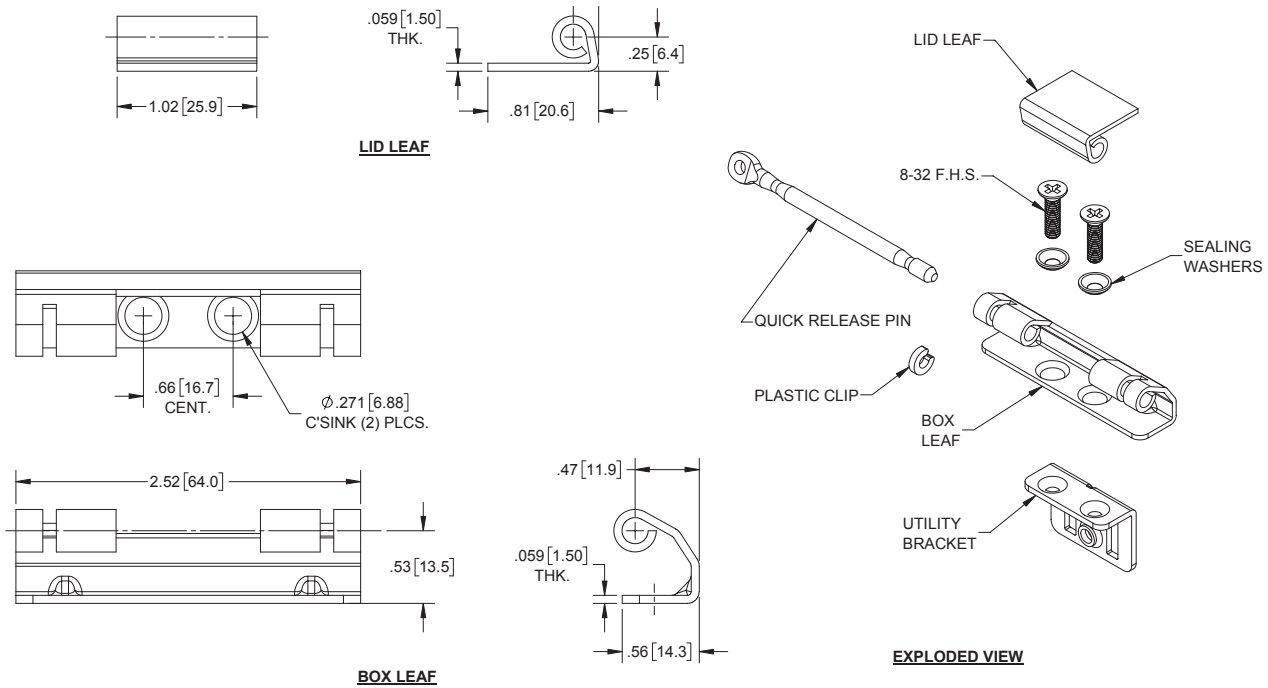


Electrical Box Hinge Assembly Kit - Quick Release Pin

Kit Part Number	Component Part Number	Description	Material	Finish
J2098SS	---	box leaf	304SS	mill
	---	quick release pin	304SS	mill
	P1038	plastic clip	plastic	yellow
	J2077SS	lid leaf	304SS	mill
	J2074ZN	utility bracket	steel	zinc plated
	X124SS	8-32 thd. x 5/8" long FHS	stainless steel	mill
	P1037	sealing washer	nylon	smooth



- ▶ for a proper seal between box leaf, electrical box and utility bracket, the through holes on the electrical box must be .234 [5.94] - .236 [6.00] diameter
- ▶ when mounted, hinge is concealed for higher security
- ▶ features a captive pin design to prevent pin from slipping out with vibration or when installing in different orientations



10-32 Thread Utility Bracket and Screws

Part Number	Description	Material	Finish
J2115SS	#10-32 screws & seal washers	304SS screws Teflon nylon washers	mill screws smooth washers
J2074ZN-01	utility bracket	steel	zinc plated

- ▶ for a proper seal between box leaf, electrical box and utility bracket, the through holes on the electrical box must be .234 [5.94] - .236 [6.00] diameter

