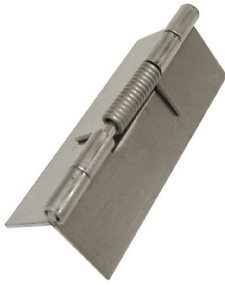
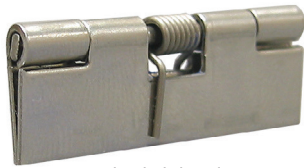


Spring Loaded Hinges - Mill Finish



spring loaded open



spring loaded closed

Part Number	Material	Material Thickness	Open Width	Length	Pin Diameter	Hole Size	Spring Action
BH5015	steel	.025	.750	1.250	.066	n/a	closed
BH5015SS	304SS	.025	.750	1.250	.066	n/a	closed
BH5022	steel	.025	.750	1.250	.066	n/a	open
BH5022SS	304SS	.025	.750	1.250	.066	n/a	open
BH5022ZN01	steel	.025	.750	1.250	.066	.130	open
BH5022SS01	304SS	.025	.750	1.250	.066	.130	open
BH5020	steel	.035	1.063	1.250	.091	#3	closed
BH502001	304SS	.035	1.063	1.250	.091	#3	reverse assembled*
BH5030	steel	.035	1.063	2.000	.091	n/a	open
BH5030SS01	304SS	.035	1.250	2.000	.091	#3	closed
BH5024	steel	.035	1.500	1.750	.091	n/a	open
BH5024SS	304SS	.035	1.500	1.750	.091	n/a	open
BH5024ZN01	steel	.035	1.500	1.750	.091	.158	open
BH5024SS01	304SS	.035	1.500	1.750	.091	.158	open
BH5031SS	304SS	.035	1.500	2.000	.091	.141	open
BH5033	steel	.039	1.062	1.250	.091	.130	open
BH5034ZN01	steel	.039	1.000	2.000	.091	.146	closed
BH5034SS01	304SS	.039	1.000	2.000	.091	.146	closed
BH5035ZN01	steel	.039	1.000	2.000	.091	.146	open
BH5035SS01	304SS	.039	1.000	2.000	.091	.146	open
BH5025	steel	.039	1.500	3.500	.091	n/a	closed
BH5025SS	304SS	.039	1.500	3.500	.091	n/a	closed
BH5025ZN01	steel	.039	1.500	3.500	.091	.158	closed
BH5025SS01	304SS	.039	1.500	3.500	.091	.158	closed
BH5021	steel	.040	1.000	2.000	.091	.142	open
BH5021SS	304SS	.040	1.000	2.000	.091	.142	open
BH5023	steel	.040	1.500	3.500	.091	n/a	open
BH5023SS	304SS	.040	1.500	3.500	.091	n/a	open
BH5023ZN01	steel	.040	1.500	3.500	.091	.157	open
BH5023SS01	304SS	.040	1.500	3.500	.091	.157	open
BH5027	steel	.047	2.000	5.000	.118	n/a	closed
BH5027SS	304SS	.047	2.000	5.000	.118	n/a	closed
BH5027ZN01	steel	.047	2.000	5.000	.118	.193	closed
BH5027SS01	304SS	.047	2.000	5.000	.118	.193	closed
BH5028	steel	.047	2.000	5.000	.118	n/a	open
BH5028SS	304SS	.047	2.000	5.000	.118	n/a	open
NEW BH5028BK01	steel	.047	2.000	5.000	.118	.193	open
BH5028ZN01	steel	.047	2.000	5.000	.118	.193	open
BH5028SS01	304SS	.047	2.000	5.000	.118	.193	open
BH5085	steel	.050	2.750	1.562	.115	.156	open
BH5087	steel	.050	3.250	1.562	.115	.156	open
BH5087ZN	steel	.050	3.250	1.562	.115	.156	open
BH5089SS	304SS	.060	1.500	2.500	.120	n/a	open
BH5089SS-01	304SS	.060	1.500	2.500	.120	.250	open
BH5090	steel	.060	2.000	3.000	.125	n/a	open

- ▶ all hinges have coiled pins
- ▶ providing that quantities are sufficient and lead times can be extended, Sierra Pacific can provide you with a spring loaded hinge that is manufactured to your exact requirements

- ▶ contact Sierra Pacific for more detailed information regarding torque specifications for all hinges on this page
- part numbers: **BH5085**, **BH5021**, **BH5023ZN01**, & **BH5087ZN** have clear zinc plated finish
- part number: **BH5028BK01** has black e-coat finish