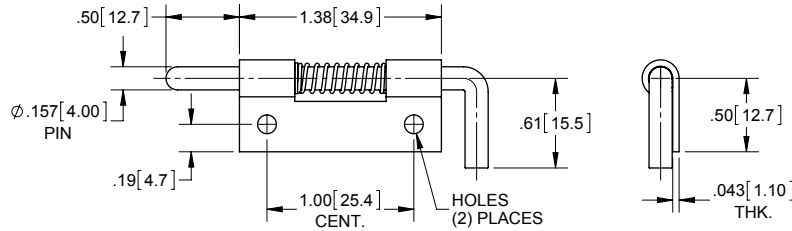




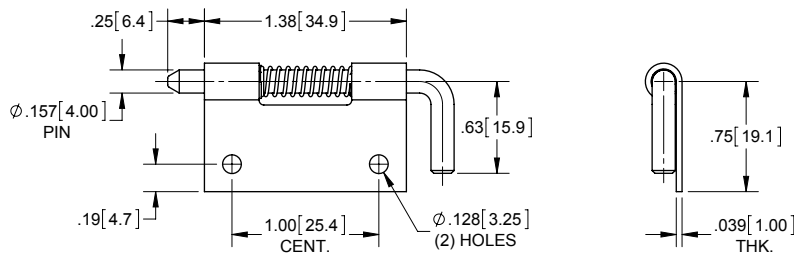
Steel Cane Bolt Latches

Part Number	Description	Material	Finish	Holes
1832HZ01	left hand	steel	zinc plated	Ø.128 [3.25]
1932HZ01	right hand	steel	zinc plated	Ø.128 [3.25]
1832HSS01	left hand	304SS	mill	Ø.136 [3.45]
1932HSS01	right hand	304SS	mill	Ø.136 [3.45]



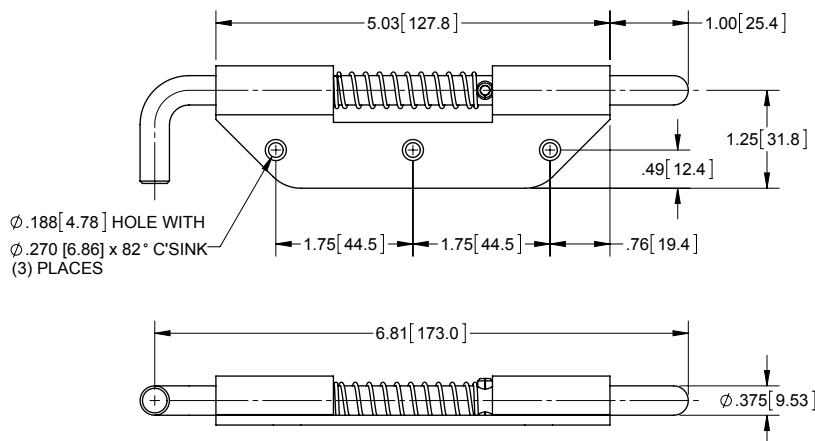
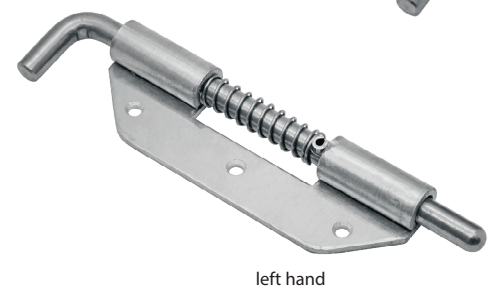
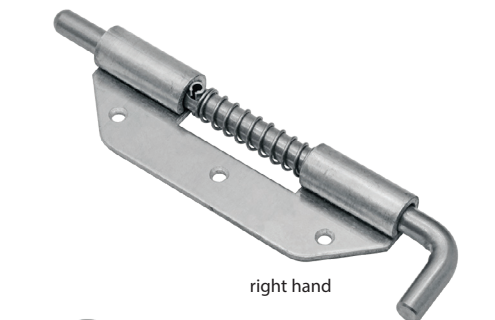
300 Series Stainless Steel Cane Bolt Latches

Part Number	Description	Material	Holes
1841HZSS	left hand	300 series stainless steel	passivated
1941HZSS	right hand	300 series stainless steel	passivated



Aluminum Spring Loaded Bolt Latches

Part Number	Description	Material	Material Thickness	Finish
1440	right hand	aluminum	.125 [3.18]	mill
1441	left hand	aluminum	.125 [3.18]	mill



▶ stainless steel pin and components