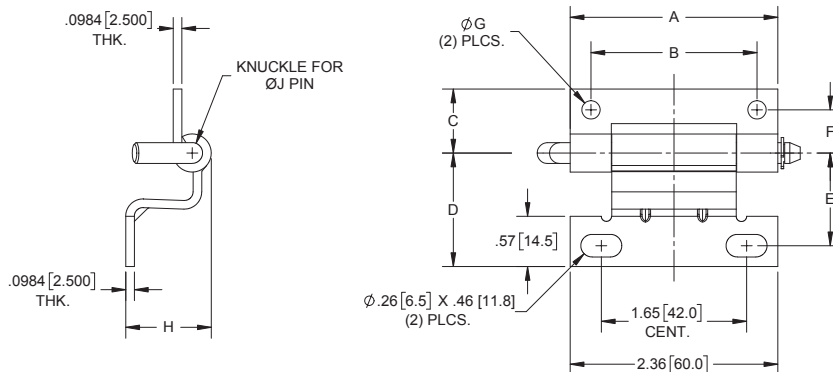
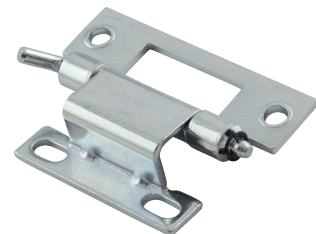


Concealed Hinges with Removable Pin

Part No.	Dim A	Dim B	Dim C	Dim D	Dim E	Dim F	Dim G	Dim H	Dim J
H2283	3.15 [80.0]	2.598 [66.00]	1.04 [26.5]	1.14 [29.0]	.860 [21.84]	.61 [15.5]	coined holes Ø .260 [6.60]	.75 [19.0]	Ø .197 [5.00]
H2283-01	2.36 [60.0]	1.890 [48.00]	.72 [18.5]	1.29 [32.8]	1.05 [26.8]	.49 [12.5]	regular holes Ø.208 [5.30]	.95 [24.2]	Ø .236 [6.00]

- ▶ material: steel
- ▶ finish: zinc plated



Institutional Hinge

Part Number	Material	Finish
J2093	steel	brass plated

- ▶ hospital tips
- ▶ brass pin

