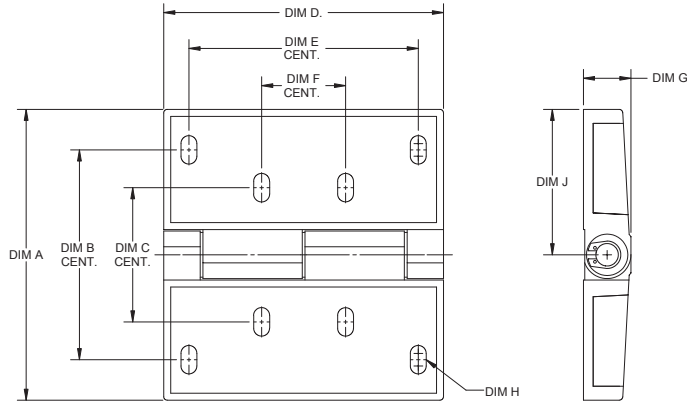


### Cast Enclosure Hinges with Fastener Covers

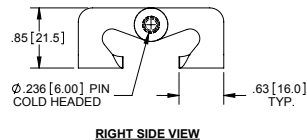
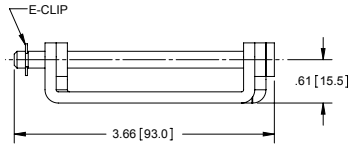
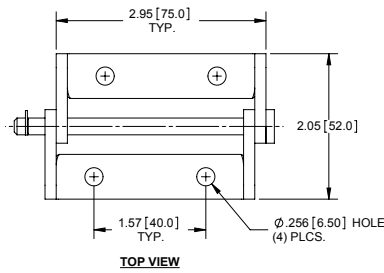
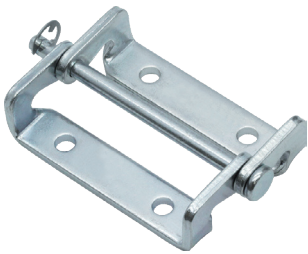


Part No.	Dim A	Dim B	Dim C	Dim D	Dim E	Dim F	Dim G	Dim H	Dim J
<b>H2076</b>	4.09 [104.0]	2.95 [75.0]	1.89 [48.0]	3.94 [100.0]	3.23 [82.0]	1.18 [30.0]	.67 [17.0]	Ø.224 [5.70] x .40 [10.2]	2.05 [52.0]
<b>H2076-01</b>	3.39 [86.0]	2.44 [62.0]	1.65 [42.0]	3.15 [80.0]	2.16 [55.0]	.98 [25.0]	.57 [14.5]	Ø.205 [5.20] x .31 [8.0]	1.69 [43.0]
<b>H2076-02</b>	2.48 [63.0]	1.78 [45.40]	1.19 [30.40]	2.36 [60.0]	1.57 [40.0]	.78 [20.0]	.45 [11.5]	Ø.165 [4.20] x .22 [5.5]	1.24 [31.5]

- ▶ material: die cast zinc
- ▶ finish: chrome plated
- ▶ stainless steel pin
- ▶ (2) polished, stainless steel covers
- ▶ (3) brass washers
- ▶ (2) retaining rings



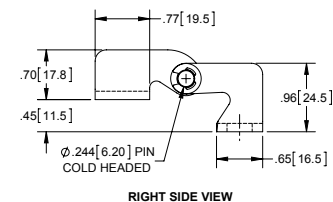
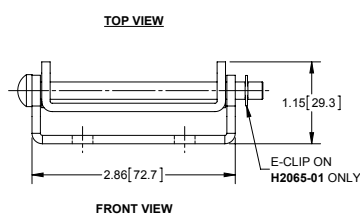
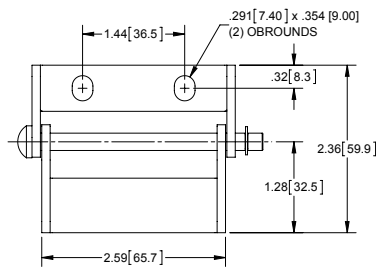
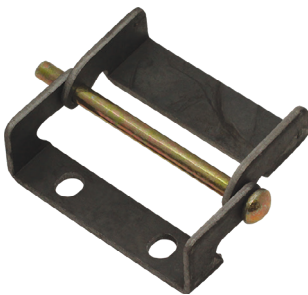
### Hinge Assembly with Removable Pin



Part Number	Material	Finish
<b>H2064ZN</b>	steel	zinc plated
<b>H2064SS</b>	300 series stainless steel	passivated

- ▶ hinge may be unassembled by removing e-clip and releasing the pin

### Hinge Assembly with Removable Pin



Part Number	E-clip	Material	Finish
<b>H2065</b>	no	steel	mill
<b>H2065-01</b>	yes	steel	mill

- ▶ pin is zinc plated with yellow chromate
- ▶ part no. **H2065-01** can be unassembled by removing e-clip and releasing the pin