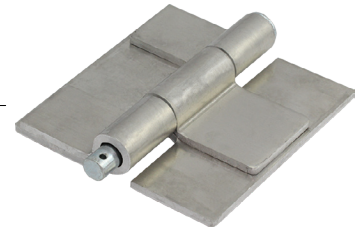
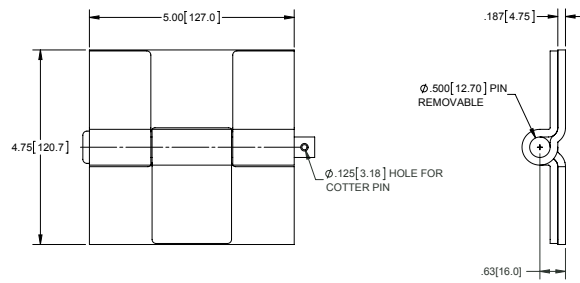


Hinge Assembly with Removable Pin

Part Number	Material	Holes	Finish	Cotter Pin
H1008	aluminum	no	mill	not included
H100802	aluminum	no	mill	included

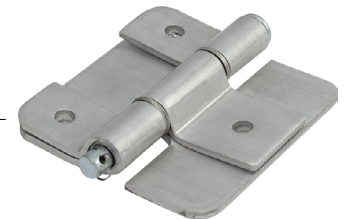
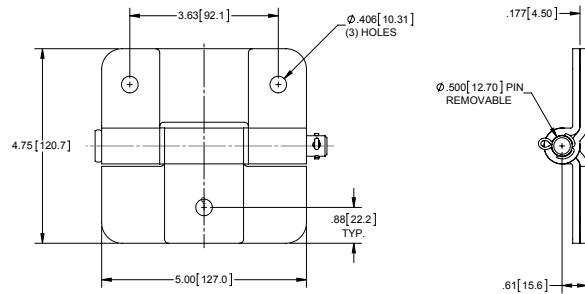
▶ hinge has a removable steel, zinc plated pin



Hinge Assembly with Removable Pin

Part Number	Material	Holes	Finish	Cotter Pin
H1009	aluminum	yes	mill	included

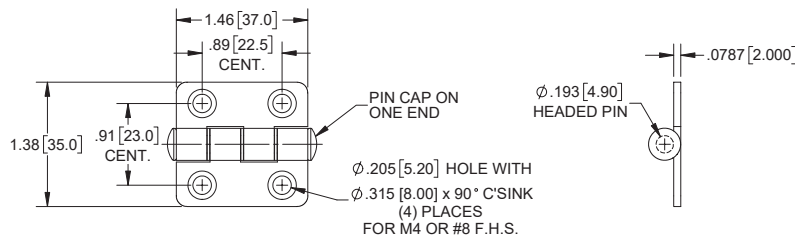
▶ hinge has a removable steel, zinc plated pin
▶ includes stainless steel bushings & cotter pin



Stainless Steel Butt Hinge

Part No.	Material	Finish
H2285SS	304SS	brushed

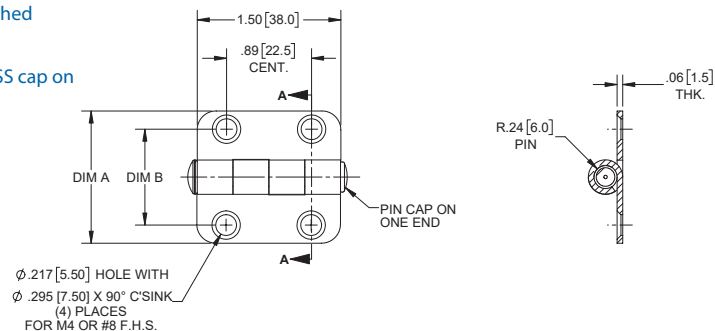
▶ mounting screw size M4 or #8 F.H.S.



Stainless Steel Butt Hinges

Part No.	Dim A	Dim B
H2271SS-01	1.378 [35.00]	1.00 [25.4]
H2271SS-02	1.870 [47.50]	1.43 [36.2]

▶ material: 304SS ▶ finish: brushed
▶ mounting screw size M4 or #8 F.H.S.
▶ pin is cold-headed on one end and has SS cap on the other



part no. H2271SS-01



part no. H2271SS-02