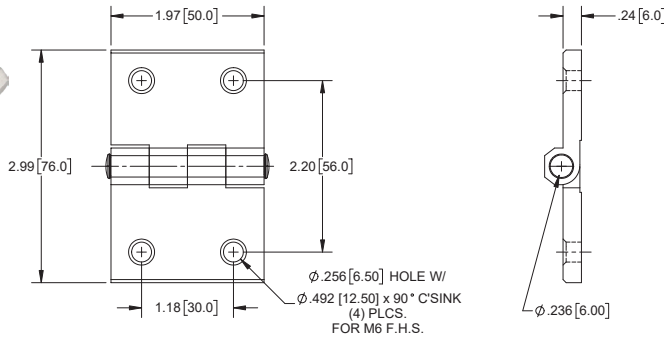


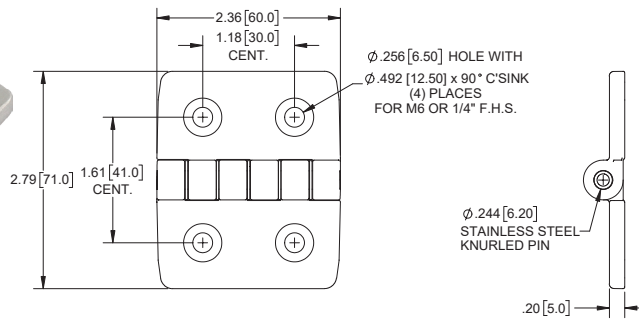
Cast Butt Hinges



Part No.	Material	Finish
H2095	die cast zinc	black powder coated
H2095SS	cast 304SS	brushed

▶ mounting screw size M6 F.H.S.

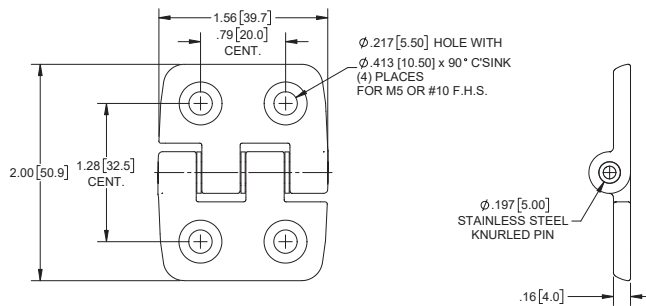
Cast Stainless Steel Butt Hinge



Part No.	Material	Finish
H2259SS	cast 304SS	brushed

▶ mounting screw size M6 or 1/4" F.H.S.

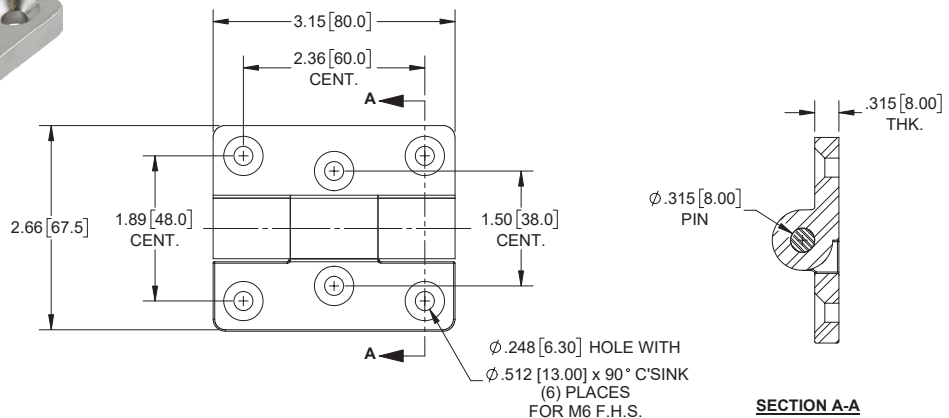
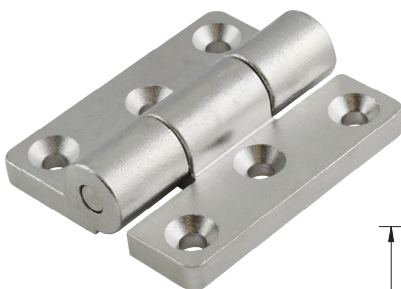
Cast Stainless Steel Butt Hinge



Part No.	Material	Finish
H2259SS-01	cast 304SS	brushed

▶ mounting screw size M5 or #10 F.H.S.

Cast Stainless Steel Butt Hinge



Part No.	Material	Finish
H2281SS	cast 304SS	electropolished

▶ mounting screw size M6 F.H.S.