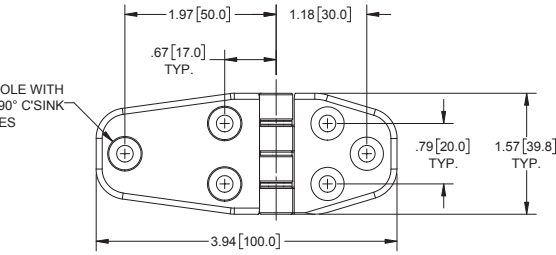


Die Cast Zinc Butt Hinge

| Part No. | Material | Finish |
|-------------------|---------------|---------------------|
| H2253BK-01 | die cast zinc | black powder coated |

- ▶ steel, nickel plated pin
- ▶ mounting screw size M5 or #10 F.H.S.

Ø .2165 [5.500] HOLE WITH
Ø .433 [11.00] X 90° C'SINK
(6) PLACES

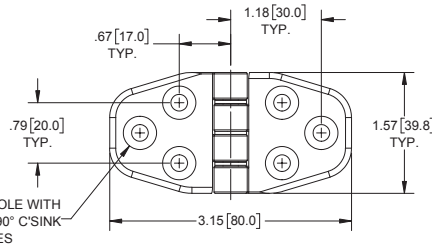


Die Cast Zinc Butt Hinge

| Part No. | Material | Finish |
|-------------------|---------------|---------------------|
| H2253BK-02 | die cast zinc | black powder coated |

- ▶ steel, nickel plated pin
- ▶ mounting screw size M5 or #10 F.H.S.

Ø .2165 [5.500] HOLE WITH
Ø .433 [11.00] X 90° C'SINK
(6) PLACES



Die Cast Zinc Butt Hinge

| Part No. | Material | Finish |
|-------------------|---------------|---------------------|
| H2253BK-03 | die cast zinc | black powder coated |

- ▶ steel, nickel plated pin
- ▶ mounting screw size M5 or #10 F.H.S.

Ø .2165 [5.500] HOLE WITH
Ø .433 [11.00] X 90° C'SINK
(6) PLACES

