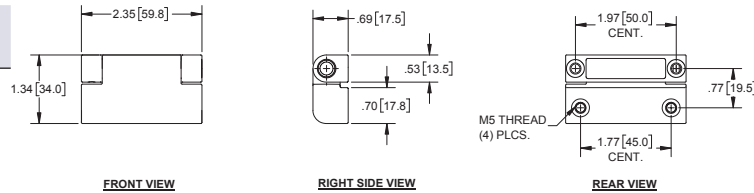


Die Cast Zinc Hinges

Part No.	Material	Finish
H2246BK-01	die cast zinc	black powder coated
H2246CH-01	die cast zinc	dull chrome plated

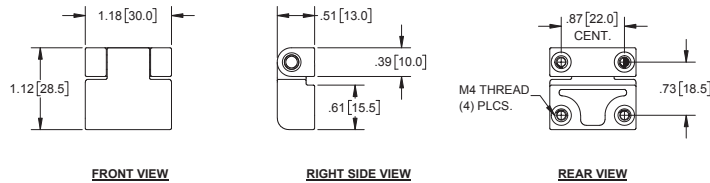
- ▶ pin & set screw: steel with nickel plated finish
- ▶ removable pin is kept in place by set screw
- ▶ includes (4) O-rings to provide sealing for each screw



Die Cast Zinc Hinges

Part No.	Material	Finish
H2246BK-02	die cast zinc	black powder coated
H2246CH-02	die cast zinc	dull chrome plated

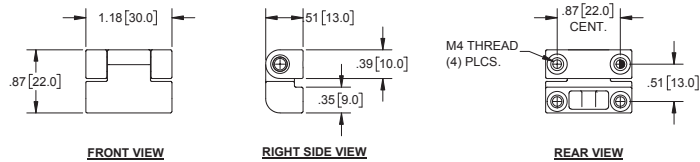
- ▶ steel, nickel plated pin
- ▶ includes (4) O-rings to provide sealing for each screw



Die Cast Zinc Hinges

Part No.	Material	Finish
H2246BK-03	die cast zinc	black powder coated
H2246CH-03	die cast zinc	dull chrome plated

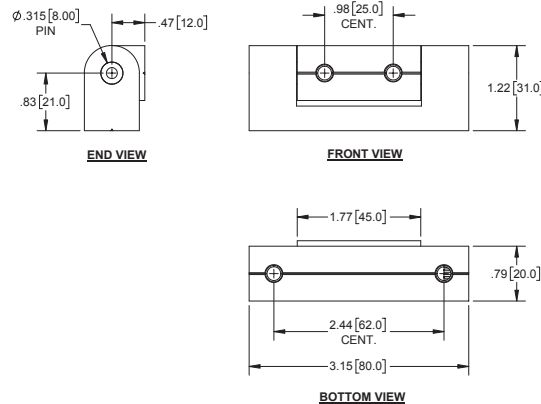
- ▶ steel, nickel plated pin
- ▶ includes O-ring to use when mounting



Aluminum Hinge Block

Part No.	Material	Finish
H2277BK	cast aluminum	black powder coated

- ▶ steel, nickel plated pin



Die Cast Zinc Hinge Blocks

Part No.	Dim A	Dim B	Dim C	Dim D	Dim E	Thread
H2255BK-01	2.48 [63.0]	1.69 [43.0]	0.51 [13.0]	0.63 [16.0]	0.78 [19.8]	M8
H2255BK-02	1.77 [45.0]	1.26 [32.0]	0.46 [11.6]	0.55 [14.0]	0.59 [15.0]	M6

- ▶ material: die cast zinc
- ▶ finish: black powder coated
- ▶ steel, nickel plated pin

