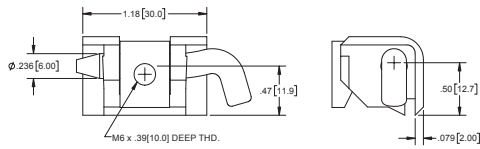
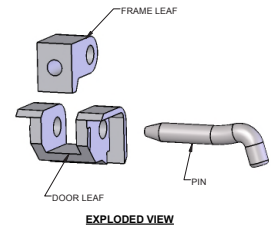


Enclosure Hinge

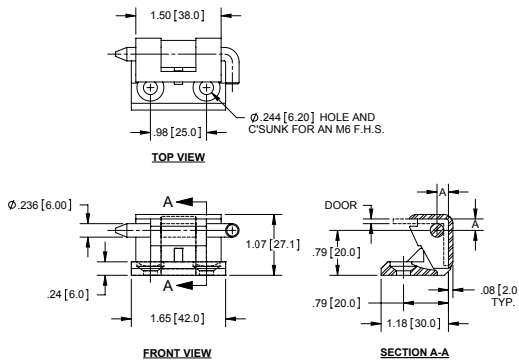


Part No.	Material	Finish	Door
H3537	die cast zinc	smooth black powder coated	1.5-2mm thick

components can be purchased separately

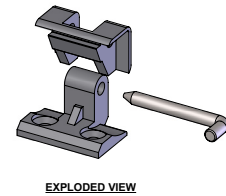


Cast Take-apart Enclosure Hinges

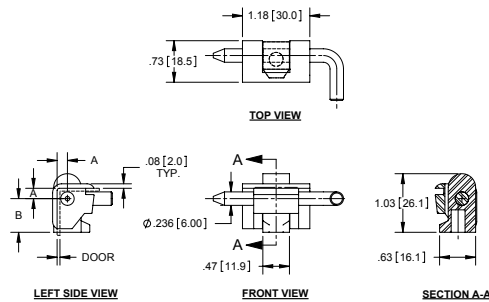


Part Number	Material	Door	Dim. A
H2071	die cast zinc	2mm thick	5.1mm
H2071-01*	die cast zinc	3mm thick	6.1mm

- black powder coated leaves
- steel, nickel plated pin
- * indicates non-stock items

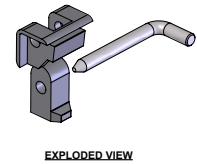


Cast Take-apart Enclosure Hinges

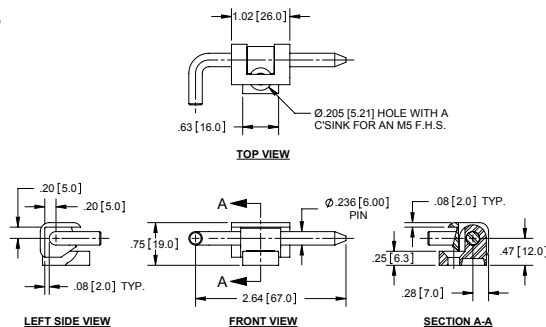
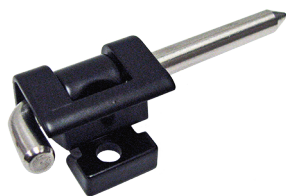


Part Number	Material	Door	Dim. A	Dim. B
H2074	die cast zinc	1.5mm thick	4.6mm	15mm
H2074-01	die cast zinc	2mm thick	5.1mm	15mm
H2074-02	die cast zinc	1.5mm thick	4.6mm	17mm
H2074-03	die cast zinc	2mm thick	5.1mm	17mm
H2074-04	die cast zinc	1.5mm thick	4.6mm	19mm
H2074-05	die cast zinc	2mm thick	5.1mm	19mm

- black powder coated leaves
- steel, nickel plated pin



Cast Take-apart Enclosure Hinge



Part Number	Material	Finish
H2077	die cast zinc	black powder coated

- steel, nickel plated pins

