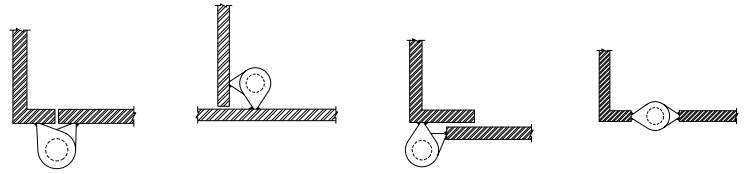


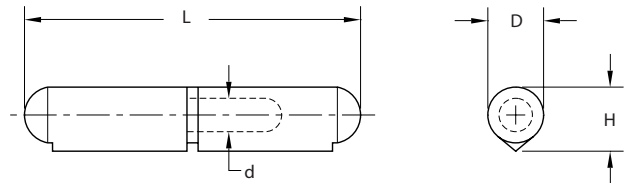
Weld-on Hinges

Steel Body, Fixed Steel Pin, Brass Bushing

Part Number	Length (L)	Body Dia. (D)	Thickness (H)	Pin Dia. (d)
W100	1.57 [40]	.31 [8]	.37 [9.6]	.20 [5]
W110	1.97 [50]	.31 [8]	.37 [9.6]	.20 [5]
W120	2.36 [60]	.39 [10]	.47 [12]	.24 [6]
W130	2.76 [70]	.45 [11.5]	.52 [13.2]	.24 [6]
W140	3.15 [80]	.51 [13]	.61 [15.4]	.31 [8]
W160	3.94 [100]	.63 [16]	.77 [19.5]	.39 [10]
W170	4.72 [120]	.63 [16]	.77 [19.5]	.39 [10]
W180	5.31 [135]	.71 [18]	.90 [22.9]	.50 [13]
W190	5.91 [150]	.79 [20]	.99 [25.2]	.50 [13]
W200	7.09 [180]	.79 [20]	.99 [25.2]	.55 [14]
W210	7.87 [200]	.91 [23]	1.11 [28.3]	.63 [16]
W220	10.24 [260]	1.10 [28]	1.46 [37]	.75 [19]



welding details



▶ additional brass grease fittings and bushings may be purchased separately

Steel Body, Fixed Brass Pin, Brass Bushing

Part Number	Length (L)	Body Dia. (D)	Thickness (H)	Pin Dia. (d)
W100-01	1.57 [40]	.31 [8]	.37 [9.6]	.20 [5]
W110-01	1.97 [50]	.31 [8]	.37 [9.6]	.20 [5]
W120-01	2.36 [60]	.39 [10]	.47 [12]	.24 [6]
W130-01	2.76 [70]	.45 [11.5]	.52 [13.2]	.24 [6]
W140-01	3.15 [80]	.51 [13]	.61 [15.4]	.31 [8]
W160-01	3.94 [100]	.63 [16]	.77 [19.5]	.39 [10]
W170-01	4.72 [120]	.63 [16]	.77 [19.5]	.39 [10]
W180-01	5.31 [135]	.71 [18]	.90 [22.9]	.50 [13]
W190-01	5.91 [150]	.79 [20]	.99 [25.2]	.50 [13]
W200-01	7.09 [180]	.79 [20]	.99 [25.2]	.55 [14]
W210-01	7.87 [200]	.91 [23]	1.11 [28.3]	.63 [16]
W220-01	10.24 [260]	1.10 [28]	1.46 [37]	.75 [19]



DUE TO TIGHT FIT TOLERANCES, WE DO NOT RECOMMEND SEPARATING PAIRED MALE & FEMALE ASSEMBLIES AS SUPPLIED. SOME MALE BARRELS MAY NOT FIT WITH OTHER FEMALE BARRELS.

Weld-on Hinges with Grease Fitting

Steel Body, Fixed Steel Pin, Brass Bushing, Grease Fitting

Part Number	Length (L)	Body Dia. (D)	Thickness (H)	Pin Dia. (d)
NEW W120-02	2.36 [60]	.39 [10]	.47 [12]	.24 [6]
W140-02	3.15 [80]	.51 [13]	.61 [15.4]	.31 [8]
W160-02	3.94 [100]	.63 [16]	.77 [19.5]	.39 [10]
W170-02	4.72 [120]	.63 [16]	.77 [19.5]	.39 [10]
W190-02	5.91 [150]	.79 [20]	.99 [25.2]	.50 [13]
W200-02	7.09 [180]	.79 [20]	.99 [25.2]	.55 [14]
W210-02	7.87 [200]	.91 [23]	1.11 [28.3]	.63 [16]
W220-02	10.24 [260]	1.10 [28]	1.46 [37]	.75 [19]



Steel Body, Fixed Brass Pin, Brass Bushing, Grease Fitting

Part Number	Length (L)	Body Dia. (D)	Thickness (H)	Pin Dia. (d)
W140-01GF	3.15 [80]	.51 [13]	.61 [15.4]	.31 [8]
W160-01GF	3.94 [100]	.63 [16]	.77 [19.5]	.39 [10]
W170-01GF	4.72 [120]	.63 [16]	.77 [19.5]	.39 [10]
W190-01GF	5.91 [150]	.79 [20]	.99 [25.2]	.47 [12]
W200-01GF	7.09 [180]	.79 [20]	.99 [25.2]	.55 [14]
W210-01GF	7.87 [200]	.91 [23]	1.11 [28.3]	.63 [16]



DUE TO TIGHT FIT TOLERANCES, WE DO NOT RECOMMEND SEPARATING PAIRED MALE & FEMALE ASSEMBLIES AS SUPPLIED. SOME MALE BARRELS MAY NOT FIT WITH OTHER FEMALE BARRELS.