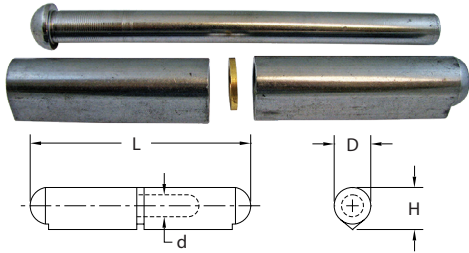


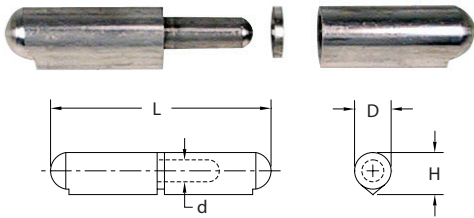
Steel Body, Removable Steel Pin, Brass Bushing



Part Number	Length (L)	Body Dia. (D)	Thickness (H)	Pin Dia. (d)
W110-03	1.97 [50]	.31 [8]	.37 [9.6]	.20 [5]
W140-03	3.15 [80]	.51 [13]	.61 [15.4]	.31 [8]
W160-03	3.94 [100]	.63 [16]	.77 [19.5]	.39 [10]
W190-03	5.91 [150]	.79 [20]	.99 [25.2]	.50 [13]
W210-03	7.87 [200]	.91 [23]	1.11 [28.3]	.63 [16]

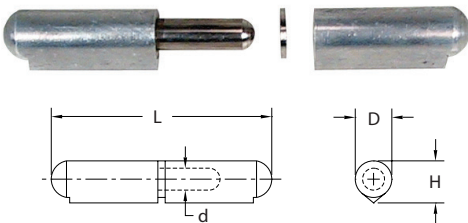
Weld-on Hinges

DUE TO TIGHT FIT TOLERANCES, WE DO NOT RECOMMEND SEPARATING PAIRED MALE & FEMALE ASSEMBLIES AS SUPPLIED. SOME MALE BARRELS MAY NOT FIT WITH OTHER FEMALE BARRELS.



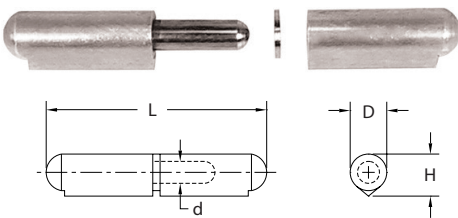
Stainless Steel Body, Fixed Stainless Steel Pin, Stainless Steel Bushing

Part Number	Length (L)	Body Dia. (D)	Thickness (H)	Pin Dia. (d)
W100-10	1.57 [40]	.31 [8]	.37 [9.6]	.20 [5]
W110-10	1.97 [50]	.31 [8]	.37 [9.6]	.20 [5]
W120-10	2.36 [60]	.39 [10]	.47 [12]	.24 [6]
W130-10	2.76 [70]	.45 [11.5]	.52 [13.2]	.24 [6]
W140-10	3.15 [80]	.51 [13]	.61 [15.4]	.31 [8]
W160-10	3.94 [100]	.63 [16]	.77 [19.5]	.39 [10]
W170-10	4.72 [120]	.63 [16]	.77 [19.5]	.39 [10]
W180-10	5.31 [135]	.71 [18]	.90 [22.9]	.50 [13]
W190-10	5.91 [150]	.79 [20]	.99 [25.2]	.50 [13]
W210-10	7.87 [200]	.91 [23]	1.11 [28.3]	.63 [16]



Aluminum Body, Fixed Stainless Steel Pin, Stainless Steel Bushing

Part Number	Length (L)	Body Dia. (D)	Thickness (H)	Pin Dia. (d)
W100-20	1.57 [40]	.31 [8]	.37 [9.6]	.20 [5]
W110-20	1.97 [50]	.31 [8]	.37 [9.6]	.20 [5]
W120-20	2.36 [60]	.39 [10]	.47 [12]	.24 [6]
W130-20	2.76 [70]	.45 [11.5]	.52 [13.2]	.24 [6]
W140-20	3.15 [80]	.51 [13]	.61 [15.4]	.31 [8]
W160-20	3.94 [100]	.63 [16]	.77 [19.5]	.39 [10]
W180-20	5.31 [135]	.71 [18]	.90 [22.9]	.50 [13]
W190-20	5.91 [150]	.79 [20]	.99 [25.2]	.50 [13]
W200-20	7.09 [180]	.79 [20]	.99 [25.2]	.50 [13]
W210-20	7.87 [200]	.91 [23]	1.11 [28.3]	.63 [16]



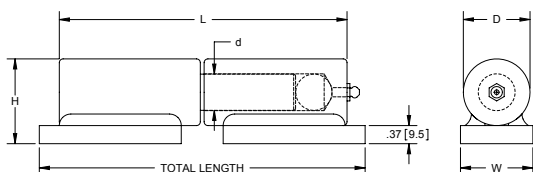
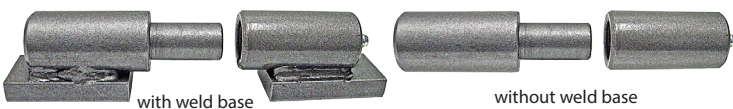
NEW PRODUCT FAMILY

316SS

316SS Body, Fixed 316SS Pin, 316SS Bushing

Part Number	Length (L)	Body Dia. (D)	Thickness (H)	Pin Dia. (d)
W120-30	2.36 [60]	.39 [10]	.47 [12]	.24 [6]
W140-30	3.15 [80]	.51 [13]	.61 [15.4]	.31 [8]
W160-30	3.94 [100]	.63 [16]	.77 [19.5]	.39 [10]
W170-30	4.72 [120]	.63 [16]	.77 [19.5]	.39 [10]

Steel Body, Fixed Steel Pin with Grease Fitting



Part Number	Length (L)	Body Dia. (D)	Pin Dia. (d)	Height (H)	Width (W)	Total Length
W432	4.09 [103.9]	.98 [24.9]	.63 [16.0]	1.36 [34.5]	1.06 [26.9]	4.92 [125.0]
W432-01	4.09 [103.9]	.98 [24.9]	.63 [16.0]	without weld base		
W431	5.94 [150.9]	1.38 [35.1]	.75 [19.1]	1.75 [44.5]	1.50 [38.10]	6.73 [170.9]
W431-01	5.94 [150.9]	1.38 [35.1]	.75 [19.1]	without weld base		

- ▶ finish: clear coated
- ▶ includes:
 - ▶ 1/4" grease fitting
 - ▶ chrome plated hardened steel ball bearing
 - ▶ high temperature lithium grease