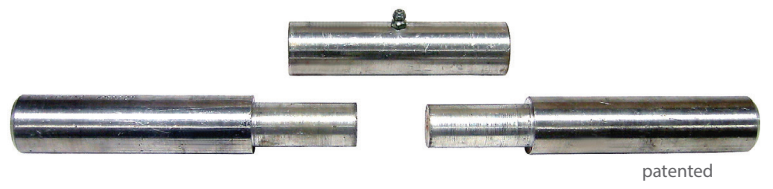
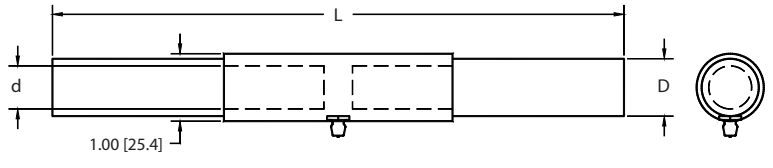


PAT. Three Piece Barrel Hinges

Part Number	Material	Length (L)	Body Dia. (D)	Pin Dia. (d)
W412	steel	10.00 [254.0]	.969 [24.61]	.75 [19.0]
W412-A	aluminum	10.00 [254.0]		.75 [19.0]
W413	steel	12.00 [304.8]		.75 [19.0]
W413-A	aluminum	12.00 [304.8]		.69 [17.5]



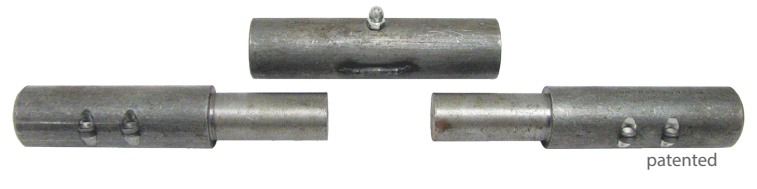
▶ 1/4" grease fitting in the middle



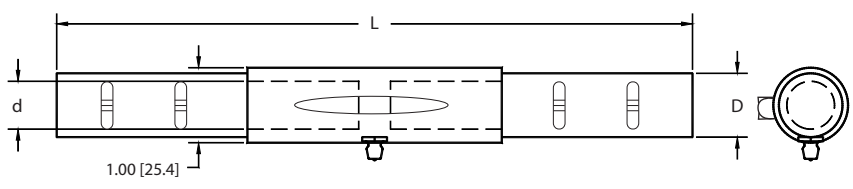
PAT. Barrel Hinges with Weld Guides

Three Piece Barrel Hinges with Weld Guides

Part Number	Material	Length (L)	Body Dia. (D)	Pin Dia. (d)
W412SK	steel	10.00 [254.0]	.969	.75
W413SK	steel	12.00 [304.8]	[24.6]	[19.1]



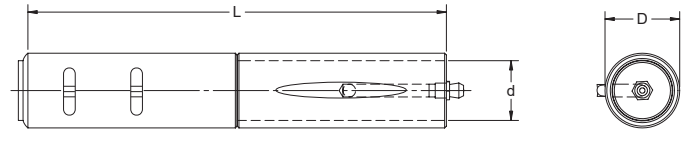
- ▶ 1/4" grease fitting in the middle
- ▶ weld guides assist for positioning and alignment



Barrel Hinges with Weld Guides

Part Number	Material	Weld Guides	Length (L)	Body Dia. (D)	Pin Dia. (d)
W430SK	steel	yes	4.00 [101.6]	1.00 [25.4]	.75 [19.1]

- ▶ 1/4" grease fitting
- ▶ weld guides assist for positioning and alignment
- ▶ part no. **W430SK** is also available without weld guides. see part no. **W430** on pg. 311



Winged Barrel Hinge

Part Number	Material	Finish	Length (L)	Leaf
W435	steel	clear coated	7.0 [177.8]	3.35 [85.1]
W436	steel	clear coated	3.5 [88.9]	1.57 [39.9]



▶ 304SS axial ball bearing

