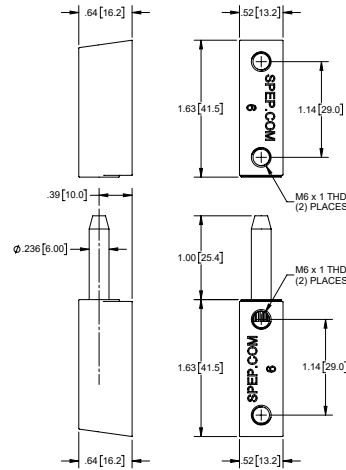


316SS 3.27 [83.0] Lift-off Hinges, Stainless Steel

Part Number	Material	Finish
ML16SS	316SS	mirror polished
ML16SS-01	304SS	mirror polished

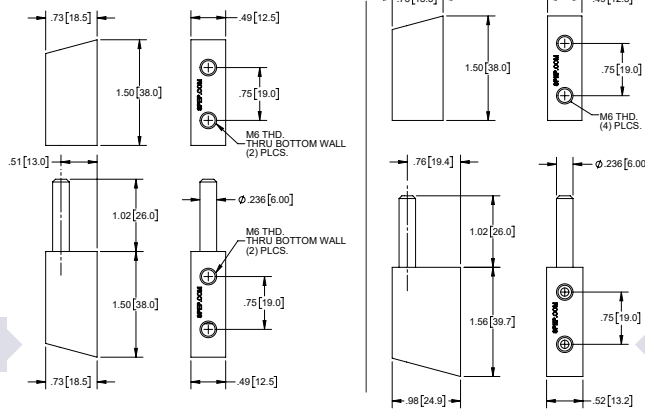
▶ 316SS pin



316SS 3.00 [76.0] Lift-off Hinges, Stainless Steel

Part Number	Material	Finish
ML17SST-01	316SS	brushed
ML17SST-02*	316SS	brushed

▶ * male leaf for part no. **ML17SST-02** has a .25[6.4] offset



part number: **ML17SST-01**



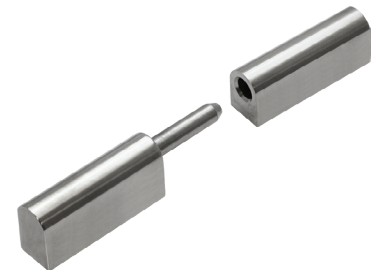
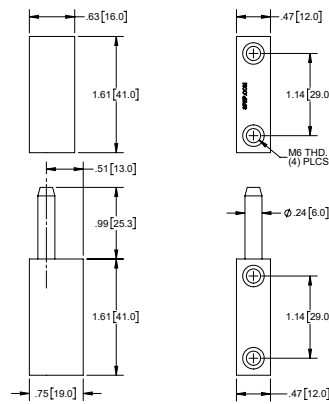
ML17SST-02
male leaf with offset

part number: **ML17SST-02**

3.23 [82.0] Offset Lift-off Hinge, Stainless Steel

Part Number	Material	Finish
ML18SS	304SS	mirror polished

▶ male leaf has .12 [3.0] offset
▶ 304SS pin, mill finish



3.15 [80.0] Lift-off Hinge, Die Cast Zinc

Part No.	Material	Finish
ML38	die cast zinc	black powder coated

▶ steel, nickel plated pin

