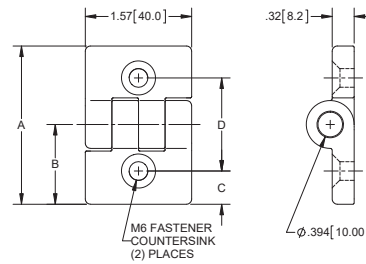


Plastic Hinges

Part Number	A	B	C	D	Radial Working Load (lb)	Axial Working Load (lb)
H3512P	2.34 [59.5]	1.18 [30.0]	.49 [12.5]	1.38 [35.0]	150	80
H3513P	2.58 [65.5]	1.16 [29.5]	.49 [12.5]	1.57 [40.0]	150	65
H3514P	2.95 [75.0]	1.26 [32.0]	.51 [13.0]	1.69 [43.0]	150	60
H3515P	2.83 [72.0]	1.42 [36.0]	.51 [13.0]	1.81 [46.0]	150	65
H3516P	3.54 [90.0]	1.77 [45.0]	.78 [19.7]	1.99 [50.6]	150	60
H3517P	3.19 [81.0]	1.42 [36.0]	.51 [13.0]	1.89 [48.0]	150	60

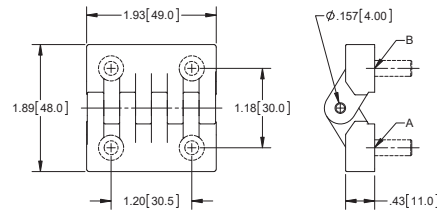
▶ refer to page 326 for material information



Plastic Hinges

Part Number	A	B	Radial Working Load (lb)	Axial Working Load (lb)
H3511P	M5 fastener counterbores	M5 fastener counterbores	250	150
H3511P-01	M6 x .55 [14.0] long threaded studs	M6 x .55 [14.0] long threaded studs	250	150
H3511P-02	M6 threaded inserts	M6 x .55 [14.0] long threaded studs	250	150
H3511P-03	M5 fastener counterbores	M6 x .55 [14.0] long threaded studs	250	150
H3511P-04	M5 fastener counterbores	M6 threaded inserts	250	150
H3511P-05	M6 threaded inserts	M6 threaded inserts	250	150

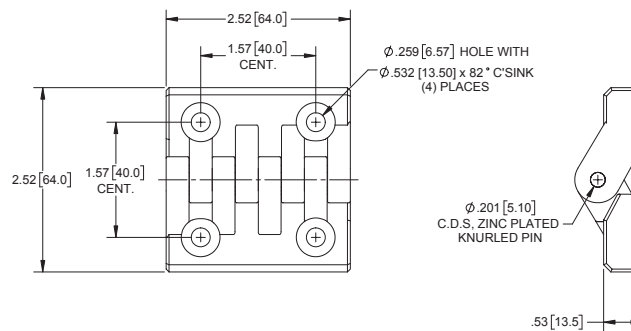
▶ refer to page 326 for material information



Hinge

Part No.	Material	Finish
H3539P	plastic	matte black

▶ refer to page 326 for material information



Plastic Beveled Hinges

Part Number	A	B	Radial Working Load (lb)	Axial Working Load (lb)
H3506P	M4 fastener counterbores	M4 fastener counterbores	100	100
H3506P-01	M4 x .47 [12.0] long threaded studs	M4 x .47 [12.0] long threaded studs	100	100
H3506P-03	M4 fastener counterbores	M4 x .47 [12.0] long threaded studs	100	100
H3506P-05	M4 threaded inserts	M4 threaded inserts	100	100

▶ refer to page 326 for material information

