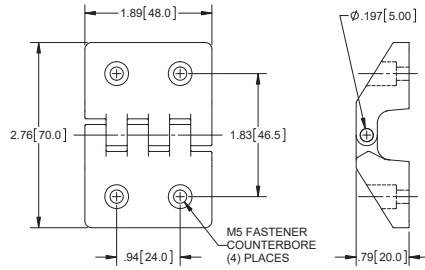


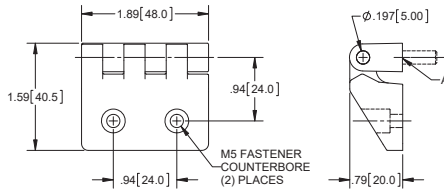
Plastic Beveled Hinge with Counterbores



Part Number	Radial Working Load (lb)	Axial Working Load (lb)
<b>H3507P</b>	200	100

▶ refer to page 326 for material information

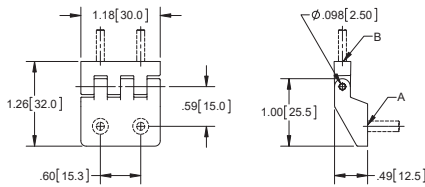
Plastic Partial Beveled Hinges



Part Number	A	Radial Working Load (lb)	Axial Working Load (lb)
<b>H3508P-03</b>	M5 x .51 [13.0] long threaded studs	200	100
<b>H3508P-04</b>	M5 fastener inserts	200	100

▶ refer to page 326 for material information

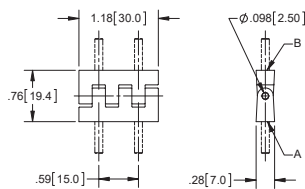
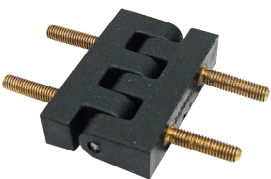
Plastic Partial Beveled Hinges



Part Number	A	B	Radial Working Load (lb)	Axial Working Load (lb)
<b>H3505P-01</b>	M4 x .47 [12.0] long threaded studs	M3 x .47 [12.0] long threaded studs	100	100
<b>H3505P-02</b>	M4 threaded inserts	M3 x .47 [12.0] long threaded studs	100	100
<b>H3505P-03</b>	M4 fastener counterbores	M3 x .47 [12.0] long threaded studs	100	100
<b>H3505P-04</b>	M4 fastener counterbores	M3 threaded inserts	100	100
<b>H3505P-05</b>	M4 threaded inserts	M3 threaded inserts	100	100

▶ refer to page 326 for material information

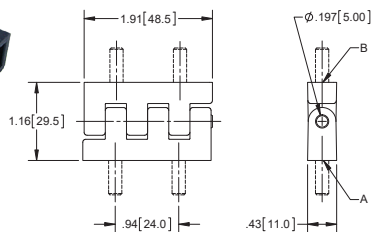
Plastic 90° Angle Hinges



Part Number	A	B	Radial Working Load (lb)	Axial Working Load (lb)
<b>H3509P-01</b>	M3 x .47 [12.0] long threaded studs	M3 x .47 [12.0] long threaded studs	100	100
<b>H3509P-02</b>	M3 fastener inserts	M3 x .47 [12.0] long threaded studs	100	100
<b>H3509P-05</b>	M3 fastener inserts	M3 fastener inserts	100	100

▶ refer to page 326 for material information

Plastic 90° Angle Hinges



Part Number	A	B	Radial Working Load (lb)	Axial Working Load (lb)
<b>H3510P-01</b>	M5 x .51 [13.0] long threaded studs	M5 x .51 [13.0] long threaded studs	200	200
<b>H3510P-02</b>	M5 threaded inserts	M5 x .51 [13.0] long threaded studs	200	200
<b>H3510P-05</b>	M5 threaded inserts	M5 threaded inserts	200	200

▶ refer to page 326 for material information