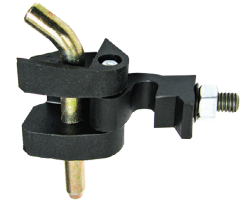
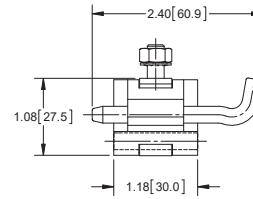
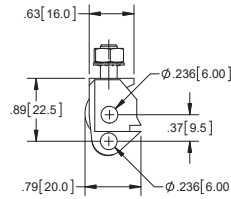


Plastic Take-apart Hinge

Part Number	Radial Working Load (lb)	Axial Working Load (lb)	Pin Material and Finish
H3530P	150	25	steel w/ yellow zinc plated finish

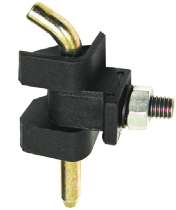
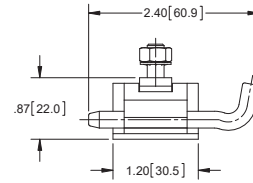
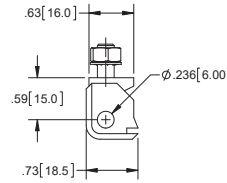
▶ refer to page 326 for material information



Plastic Take-apart Hinge

Part Number	Radial Working Load (lb)	Axial Working Load (lb)	Pin Material and Finish
H3531P	120	150	steel w/ yellow zinc plated finish

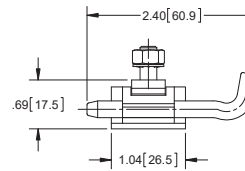
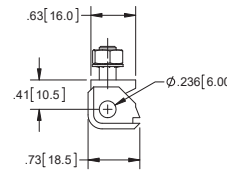
▶ refer to page 326 for material information



Plastic Take-apart Hinge

Part Number	Radial Working Load (lb)	Axial Working Load (lb)	Pin Material and Finish
H3532P	120	150	steel w/ yellow zinc plated finish

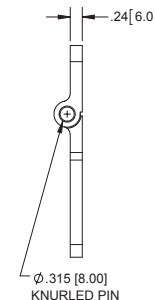
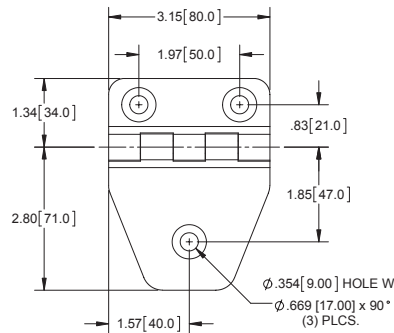
▶ refer to page 326 for material information



Plastic Hinge with Countersunk Holes

Part Number	Material	Finish	Pin
H2229P	plastic	black	steel, zinc plated

▶ refer to page 326 for material information
▶ mounting screw size M8



Plastic Hinge with Plain Holes

Part Number	Material	Finish	Pin
H2230P	glass reinforced plastic	black textured	steel, zinc plated

▶ refer to page 326 for material information

