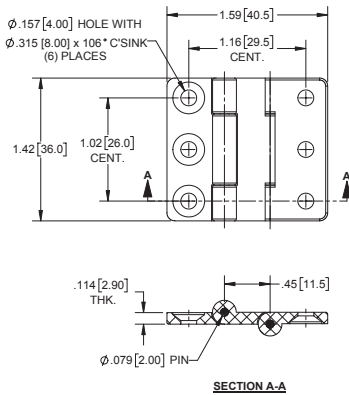


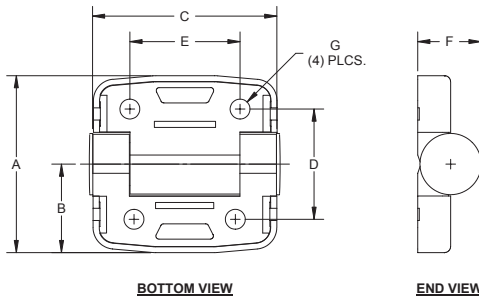
Plastic Hinge with Double Pin Construction



Part Number	Material	Finish
H2284WTP	plastic	white

- ▶ steel, zinc plated pins
- ▶ double hinged

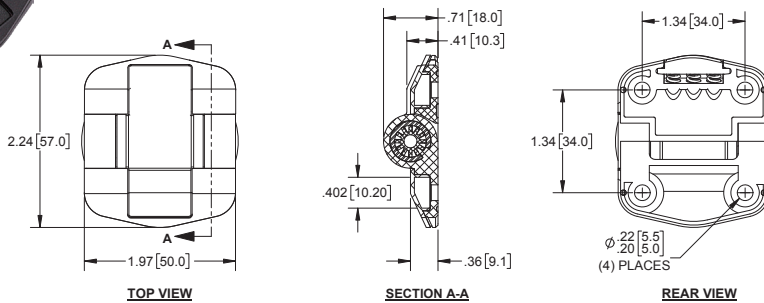
Plastic Hinges with Screw Covers



Part No.	A	B	C	D	E	F	G
H2232P-01	2.28 [58.0]	1.14 [29.0]	2.36 [60.0]	1.42 [36.0]	1.42 [36.0]	.82 [20.8]	Ø .256 [6.50]
H2232P-02	1.61 [41.0]	.81 [20.5]	1.69 [43.0]	.98 [25.0]	.95 [24.0]	.57 [14.5]	Ø .177 [4.50]

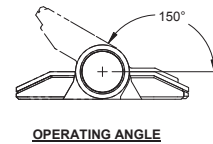
- ▶ material: plastic
- ▶ finish: black

Plastic Door Positioning Hinge

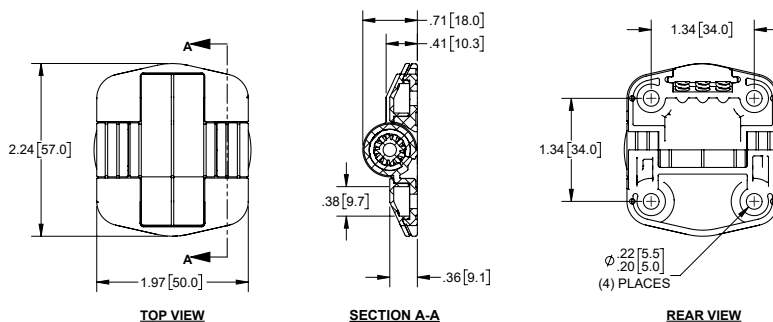


Part Number	Material	Finish	Pin
H2231P	plastic	black, textured	steel, zinc plated

- ▶ holds door open at 150° and 180°



Black Plastic Detent Hinges



Part Number	Material	Finish	Positioning Torque
H2231P-01	plastic	black, textured	(6) IN-LBF
H2231P-02			(10) IN-LBF
H2231P-03			(15) IN-LBF

- ▶ holds door open at 80° and 180°

