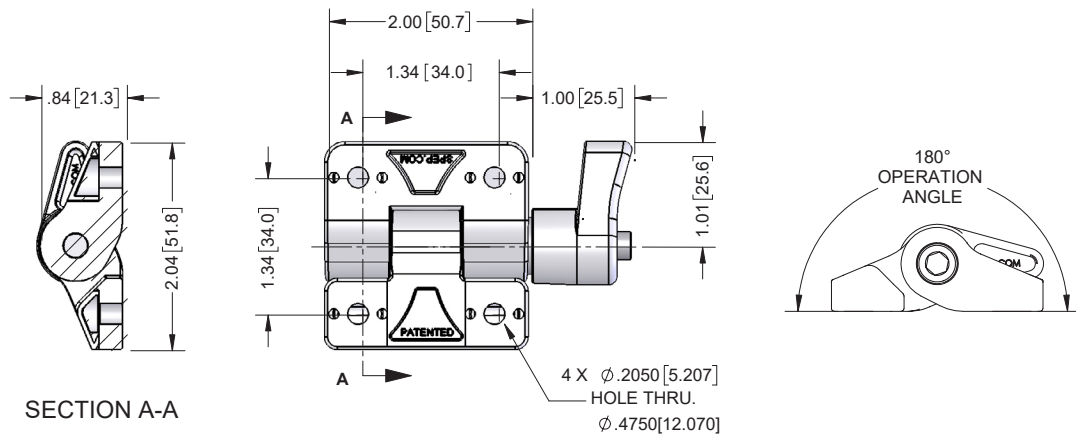


Medium Friction Hinges with Lever

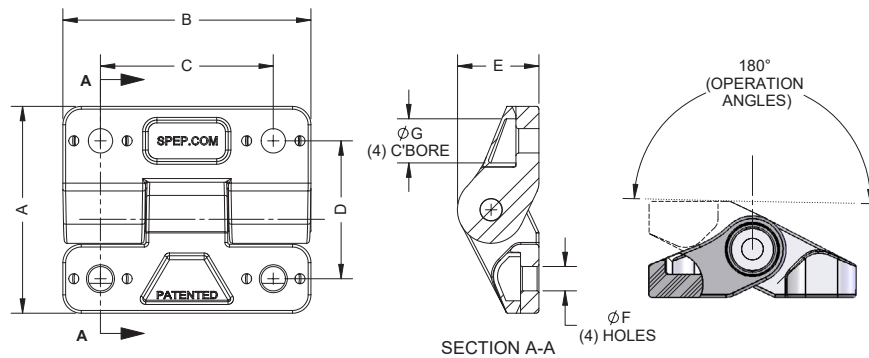


Part Number	Finish	Radial Tensile Load Strength	Axial Load Strength
FH151BKPL	black	working 100 lbs. ultimate 575 lbs.	working 100 lbs. ultimate 400 lbs.
FH151WTPL	white		

- ▶ plastic leaves with 300 series stainless steel components
- ▶ hinge tension can be set by adjusting screw
- ▶ finish: lightly textured matte finish



Non-Friction Plastic Hinges



Part Number	Finish	Dimensions							Radial Load Strength	Axial Load Strength	Recommended Screw Size
		A	B	C	D	E	F	G			
H1151BK	black	2.04	2.00	1.34	1.34	0.81	Ø 0.250	Ø 0.475	working 100 lbs. ultimate 575 lbs.	working 100 lbs. ultimate 400 lbs.	#10 round or pan head screw
H1151WT ‡	white	[51.8]	[50.7]	[34.0]	[34.0]	[20.6]	[5.21]	[12.07]			
H1200BK	black	2.25	2.700	1.88	1.50	0.89	Ø 0.265	Ø 0.575	working 150 lbs. ultimate 700 lbs.	working 120 lbs. ultimate 450 lbs.	1/4" round or pan head screw
H1200WT ‡	white	[57.2]	[68.6]	[47.8]	[38.1]	[22.5]	[6.73]	[14.61]			

- ▶ plastic leaves with 300 series stainless steel components
- ▶ hinge tension can be set by adjusting screw
- ▶ finish: lightly textured matte finish
- ‡ these hinges are non-stock