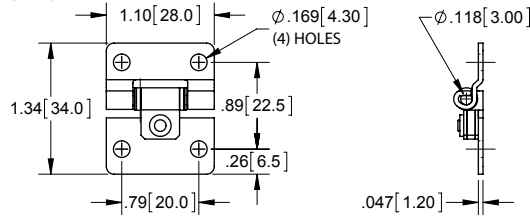


Small Stainless Steel Friction Hinge

| Part Number | Material | Finish | Torque Range |
|----------------|----------|-----------------|-------------------|
| FH010SS | 304SS | barrel polished | 3.0 - 3.9 in lbs. |

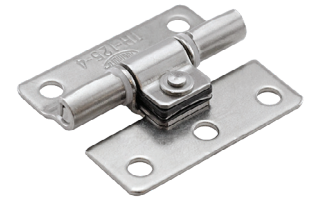
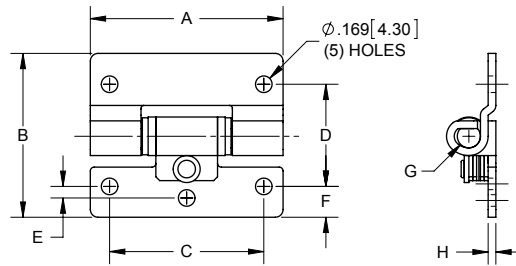
▶ provides constant resistance to keep hinge open at any angle



Large Stainless Steel Friction Hinge

| Part Number | Torque Range | A | B | C | D | E | F | G | H |
|-----------------|---------------------|-------------|-------------|---------------|---------------|-------------|------------|--------------|-------------|
| FH0150SS | 6.1 - 7.9 in lbs. | 1.57 [40.0] | 1.38 [35.0] | 1.181 [30.00] | .984 [25.00] | .000 [0.00] | .20 [5.0] | Ø.157 [4.00] | .047 [1.20] |
| FH0125SS | 12.1 - 15.6 in lbs. | 1.97 [50.0] | 1.67 [42.5] | 1.575 [40.00] | 1.043 [26.50] | .118 [3.00] | .32 [8.00] | Ø.236 [6.00] | .079 [2.00] |

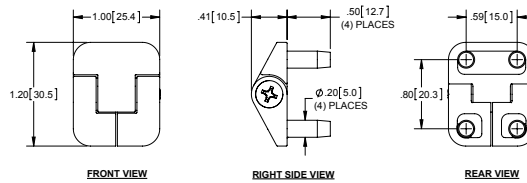
▶ material: 304SS
 ▶ finish: barrel polished
 ▶ provides constant resistance to keep hinge open at any angle



Small Plastic Friction Hinges

| Part Number | Color | Material | Finish |
|----------------|-------|--------------------------|------------------|
| FH050BK | black | glass reinforced plastic | lightly textured |
| FH050WT | white | glass reinforced plastic | lightly textured |

▶ radial tensile strength working load: 80 lbs.
 ▶ axial strength working load: 80 lbs.
 ▶ includes (4) self-tapping mounting nuts



Mini Plastic Friction Hinges

| Part Number | Material | Finish | Torque LBF-FT (N-m) | Dim A | Dim B |
|----------------|----------|--------|-------------------------|-------------|-------------|
| FH005BK | plastic | black | .059 ± .015 [.08 ± .02] | 0.79 [20.0] | .047 [12.0] |
| FH005WT | plastic | white | .059 ± .015 [.08 ± .02] | 0.79 [20.0] | .047 [12.0] |
| FH006BK | plastic | black | .103 ± .037 [.14 ± .05] | 1.18 [30.0] | 0.87 [22.0] |
| FH006WT | plastic | white | .103 ± .037 [.14 ± .05] | 1.18 [30.0] | 0.87 [22.0] |



part no. FH005WT



part no. FH006BK

