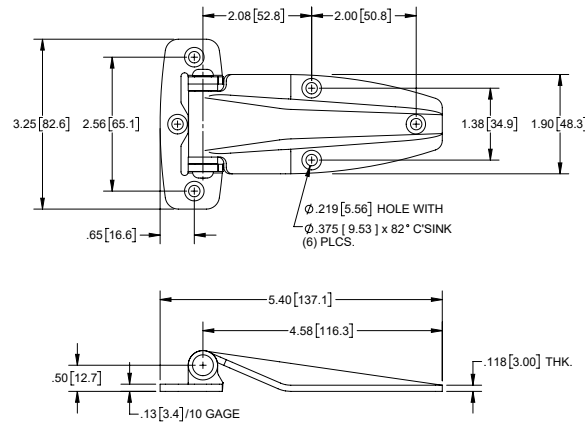


PAT.

Stamped Stainless Steel Flush Hinges

Part Number	Material	Finish	Base
1001SS	304SS	electropolished	squared shape thickness: .138 [3.40]/10 gage
1001SSBK	304SS	matte black powder coat	

▶ 304SS pin and washers

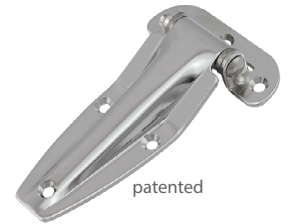
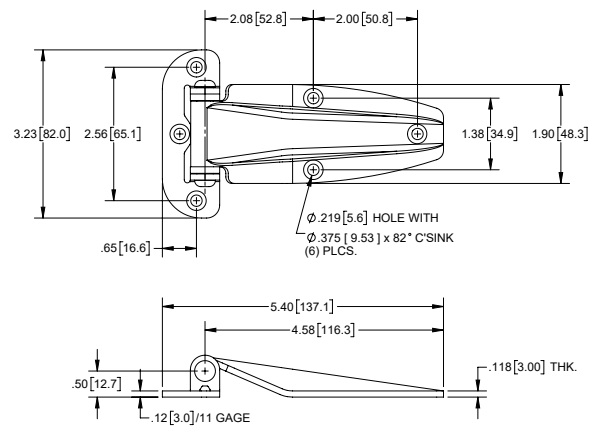


PAT.

Stamped Stainless Steel Flush Hinges

Part Number	Material	Finish	Base
1005SS	304SS	electropolished	rounded shape thickness: .118 [3.00]/11 gage
1005SSBK	304SS	black e-coat	

▶ 304SS pin and washers



Stamped Stainless Steel Flush Hinge

Part Number	Material	Finish
1008SS	304SS	passivated and polished

▶ 304SS pin and washers

