

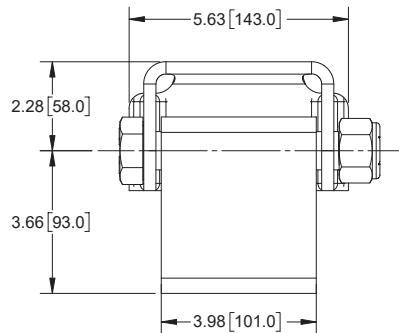
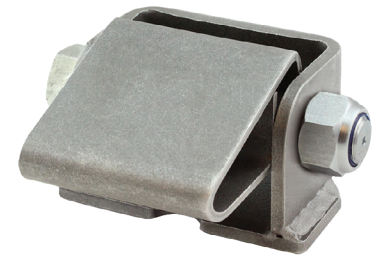


Heavy Duty Tilt Hinges

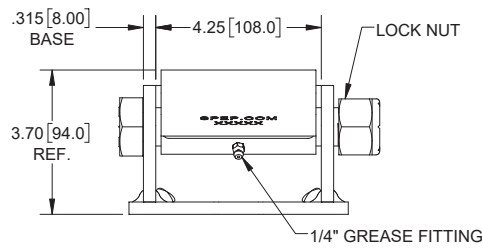
Hinges

Part No.	Assembly Description	Material	Finish
H3032	with removable hardware	steel	mill
H3032-02	with welded pin	steel	mill

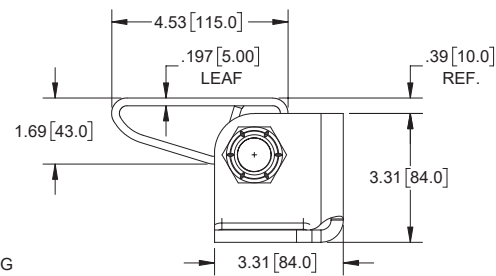
- ▶ includes 1/4" grease fitting for easy lubrication maintenance
- ▶ for applications on dump trailers, dump trucks or dump bodies
- ▶ pair of H3032 tilt hinges are suitable for use on trailers with GVWR rating up to 32,000lbs (for higher rating requirements, please contact SPEP for more information)
- ▶ unfinished for easy welding and painting
- ▶ removable hardware for ease of assembly, components include:
 - H3032-BOLT**: steel, zinc plated 1"- 8 hex head cap screw bolt
 - H3032-NUT**: steel, zinc plated nylon insert lock nut
 - H3032-WASHER**: stainless steel with mill finish triple-wave washer



TOP VIEW



FRONT VIEW



RIGHT SIDE VIEW

Steel Strap Hinges with Grease Fitting

Part No.	Description	Type of Washers	Material	Finish
H1032LH-05	left hand	flat, brass	steel	mill
H1032RH-05	right hand	flat, brass	steel	mill



right hand shown

