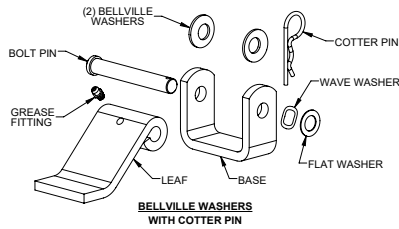
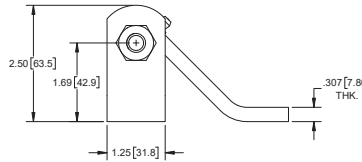
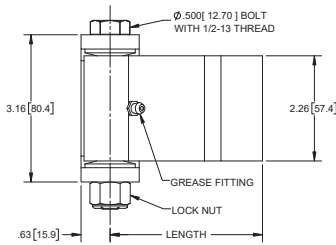


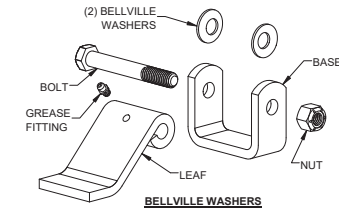
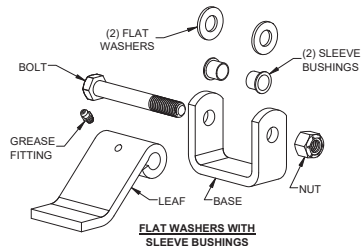
Steel Strap Hinges with Grease Fitting



left hand shown



left hand shown



Short Leaf

Part Number	Description	Length	Type of Washers	Finish
H1032LH	left hand	3.28 [83.2]	Belleville	zinc plated
H1032RH	right hand	3.28 [83.2]	Belleville	zinc plated
H1032LH-01	left hand	3.28 [83.2]	Belleville	mill
H1032RH-01	right hand	3.28 [83.2]	Belleville	mill
<b>NEW</b> H1032LH-11*	left hand	3.28 [83.2]	Belleville with cotter pin	mill
H1032LH-03	left hand	3.28 [83.2]	flat with bushings	mill
H1032RH-03	right hand	3.28 [83.2]	flat with bushings	mill

\* can be configured for left hand or right hand use

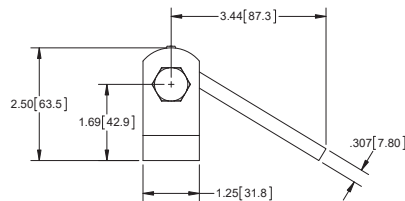
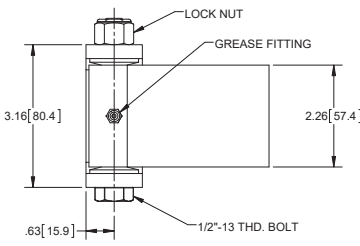
Long Leaf

Part Number	Description	Length	Type of Washers	Finish
H1032LH-10	left hand	5.25 [133.2]	Belleville	mill
H1032RH-10	right hand	5.25 [133.2]	Belleville	mill
H1032LH-15	left hand	5.25 [133.2]	flat with bushings	mill
H1032RH-15	right hand	5.25 [133.2]	flat with bushings	mill

Steel Strap Hinges with Grease Fitting



right hand shown



right hand shown

Part Number	Description	Type of Washers	Finish
H1032LH-02	left hand	Belleville	mill
H1032RH-02	right hand	Belleville	mill