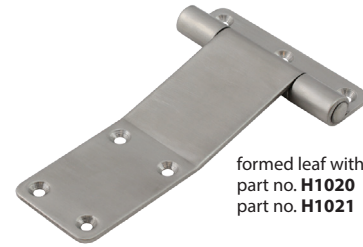
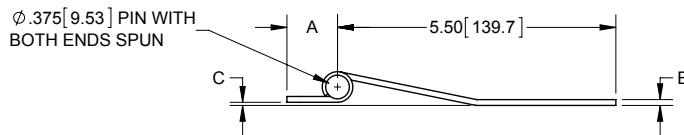
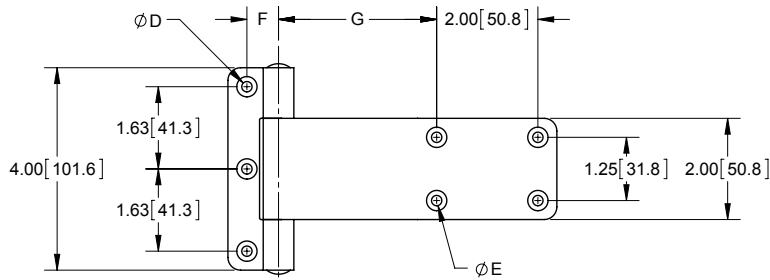


Stainless Steel Strap Hinges

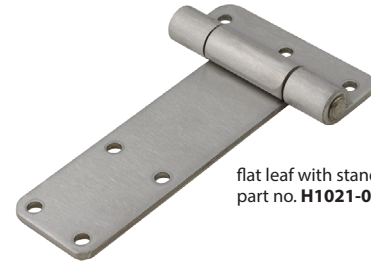
Part Number	A	B	C	D	E	F	G
H1020	1.00 [25.4]	.120 [3.05]	.062 [1.57]	Ø.196 [5.00] with 82° c'sink	Ø.196 [5.00] with 82° c'sink	.63 [16.0]	3.13 [79.5]
H1021	1.31 [33.3]	.180 [4.57]	.062 [1.57]	Ø.275 [7.00] with 82° c'sink	Ø.275 [7.00] with 82° c'sink	.81 [20.6]	3.19 [81.0]
H1021-01	1.31 [33.3]	.180 [4.57]	flush	Ø.275 [7.00] with no c'sink	Ø.275 [7.00] with no c'sink	.81 [20.6]	3.19 [81.0]

▶ material: 304SS

▶ brushed finish



formed leaf with c'sunk holes
part no. **H1020**
part no. **H1021**

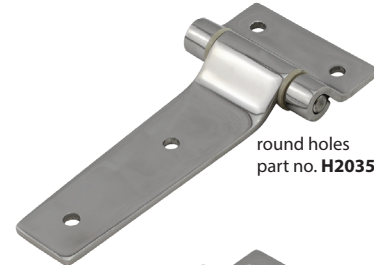
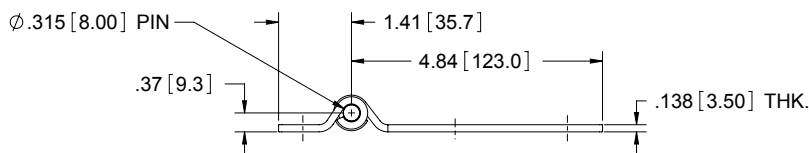
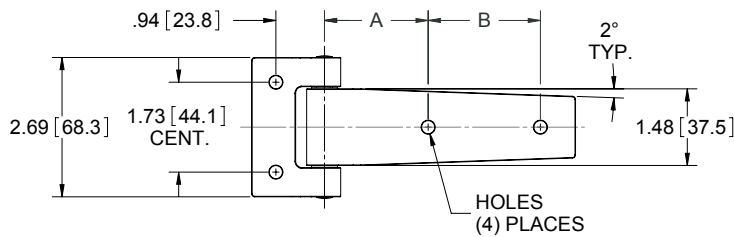


flat leaf with standard holes
part no. **H1021-01**

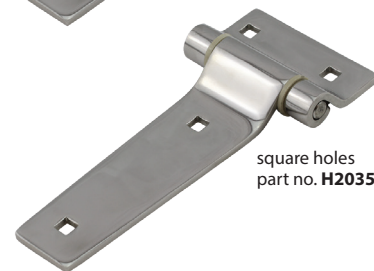
Stainless Steel Strap Hinges

Part Number	Finish	Material	A	B	Holes
H2035	polished	304SS	2.00 [50.8]	2.17 [55.1]	.252 [6.40] dia.
H2035-01	polished	304SS	1.25 [31.8]	2.92 [74.2]	.264 [6.70] sq.

▶ p/n **H2035** is often used with dome top bumper p/n **1302** on pg. **396**



round holes
part no. **H2035**



square holes
part no. **H2035-01**