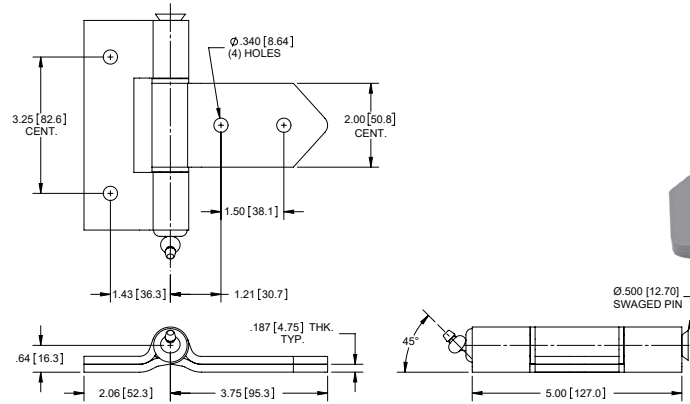


Steel Strap Hinge with Grease Fitting

| Part No. | Finish | Pin |
|----------------|--------------------|--------------------------------------|
| H1086LH | gray powder coated | swaged brass pin with grease fitting |

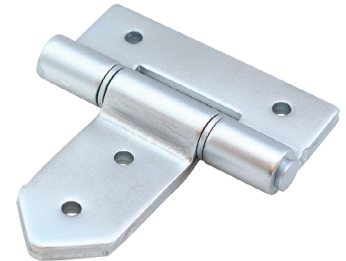
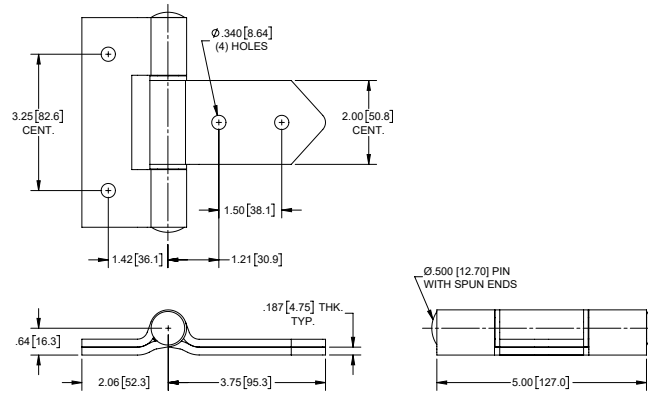
- ▶ brass pin
- ▶ brass grease fitting
- ▶ brass washers



NEW Steel Strap Hinge

| Part No. | Finish | Pin |
|-------------------|-------------|---------------------------------------|
| H1086LH-03 | zinc plated | steel, zinc plated pin with spun ends |

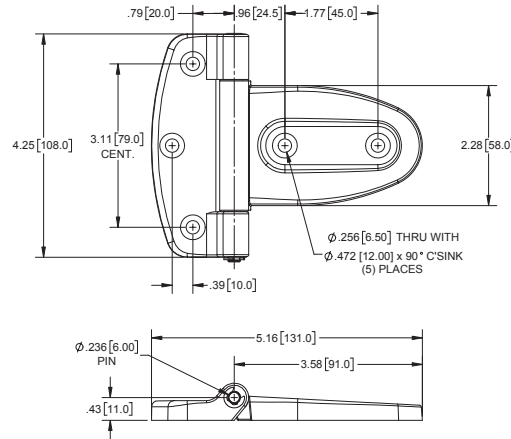
- ▶ steel, zinc plated pin
- ▶ steel, zinc plated washers



Plastic Strap Hinge

| Part No. | Material | Finish |
|--------------|----------|-------------|
| 1009P | plastic | matte black |

- ▶ 304SS pin with passivated finish



Die Cast Zinc Strap Hinges with Adjustable Offset

| Part No. | Material | Description |
|-------------------|---------------|-------------|
| H2258BK-LH | die cast zinc | left hand |
| H2258BK-RH | die cast zinc | right hand |

- ▶ finish: matte black
- ▶ stainless steel pin with passivated finish
- ▶ eccentric pin allows up/down & lateral in/out hinge adjustment

