

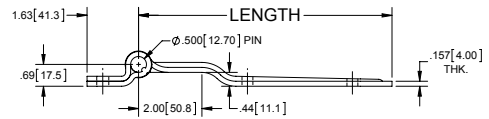
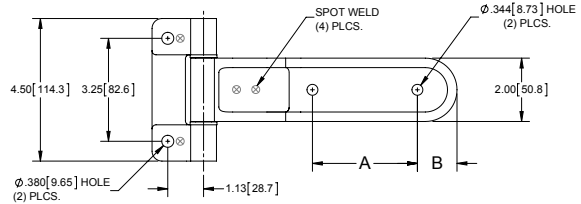
Strap Hinges



Standard Base with Offset Strap - (4) Holes

Part Number	Material	Finish	A	B	Length
H308005	steel	zinc plated	3.313 [84.15]	1.250 [31.75]	8.00 [203.2]
H308005SS	304SS	mill			
H308005A *	aluminum	mill			

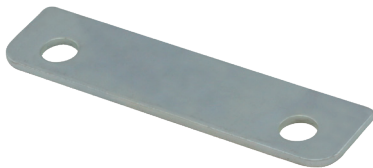
- ▶ aluminum hinges have stainless steel pins and washers
- ▶ * these hinges are stock items
- ▶ non-removable pin



Custom Options	
general options	<ul style="list-style-type: none"> ▶ custom hole pattern ▶ square holes ▶ grease fittings
steel (500 piece minimum order)	<ul style="list-style-type: none"> ▶ powder coated ▶ stainless steel pin and washers ▶ brass pin and washers
aluminum (250 piece minimum order)	<ul style="list-style-type: none"> ▶ polished ▶ anodized
stainless steel (250 piece minimum order)	<ul style="list-style-type: none"> ▶ hand polished ▶ electropolished ▶ passivated

▶ minimum order quantity will apply for these custom options

Shims



Part Number	Material	Finish
H3-03	steel	blue zinc
H3-03SS	304SS	mill
H3-03A	aluminum	mill

▶ material thickness: .125 [3.18]

Standard Base with Offset Strap - (5) Holes

Part Number	Material	Finish	A	B	C	Length
H312005 *	steel	zinc plated	3.625 [92.08]	3.625 [92.08]	1.250 [31.75]	12.00 [304.8]
H312005-01*	steel	zinc plated	2.500 [63.50]	2.500 [63.50]	1.344 [34.14]	12.00 [304.8]
H312005SS	304SS	mill	3.625 [92.08]	3.625 [92.08]	1.250 [31.75]	12.00 [304.8]
H312005A	aluminum	mill	3.625 [92.08]	3.625 [92.08]	1.250 [31.75]	12.00 [304.8]
H314005	steel	zinc plated	3.625 [92.08]	3.625 [92.08]	1.250 [31.75]	14.00 [355.6]
H314005SS	304SS	mill				
H314005A	aluminum	mill				14.00 [355.6]
H316005 *	steel	zinc plated	5.625 [142.88]	5.625 [142.88]	1.250 [31.75]	16.00 [406.4]
H316005SS *	304SS	mill				
H316005A	aluminum	mill				16.00 [406.4]

- ▶ p/n H312005-01 has a longer offset dimension of 3.50 [88.9] instead of 2.00 [50.8]
- ▶ aluminum hinges have stainless steel pins and washers
- ▶ * these hinges are stock items
- ▶ non-removable pin

