

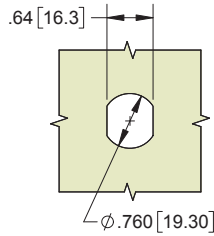
### Thumb-turn Cam Latch

Base Part Number	Length	Finish	Body Mounting	Rotation	Cam Style	Cam Fastener	Stock
K10ICP---001	5/8 [16]	chrome	hex nut	90°	any, see pages 370-371	screw-on	stock
K10OCP---001	7/8 [22]	chrome	hex nut	90°	any, see pages 370-371	screw-on	stock
K10TCP---001	1-1/8 [29]	chrome	hex nut	90°	any, see pages 370-371	screw-on	stock

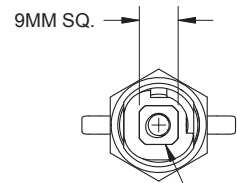
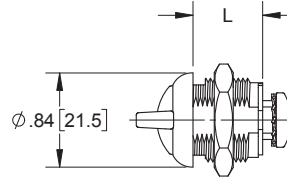
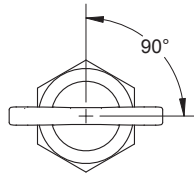


- ▶ NOTE: cam is not included
- ▶ material: die cast zinc

▶ contact sales for custom options



**MOUNTING DIMENSIONS**



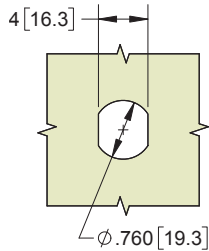
SCREW AND NUT NOT SHOWN FOR CLARITY

### Thumb-turn Cam Latch

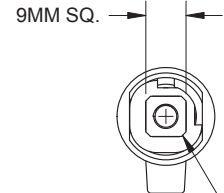
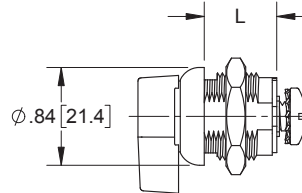
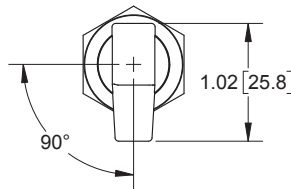
Base Part Number	Length L	Finish	Body Mounting	Rotation	Cam Style	Cam Fastener	Stock
K50ICP---001	5/8	chrome	hex nut	90°	any, see pages 370-371	screw-on	stock
K50IBK---001	5/8	black electro-plated	hex nut	90°	any, see pages 370-371	screw-on	stock



- ▶ NOTE: cam is not included
- ▶ contact sales for custom options
- ▶ material: die cast zinc



**MOUNTING DIMENSIONS**

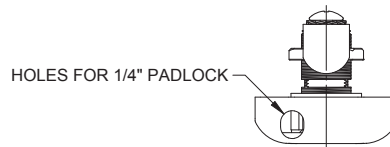


SCREW AND NUT NOT SHOWN FOR CLARITY

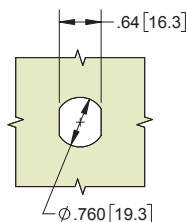
### Padlockable Thumb-turn Cam Latch

Base Part Number	Length L	Finish	Body Mounting	Rotation	Cam Style	Cam Fastener	Stock
K17LBK01	20mm	black powder coated	hex nut	90°	includes cam. receiver only accepts 8mm cams	screw-on	stock

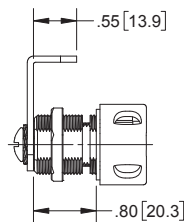
- ▶ material: die cast zinc



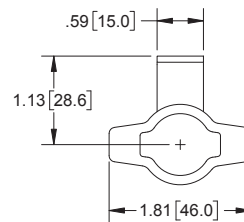
**TOP VIEW**



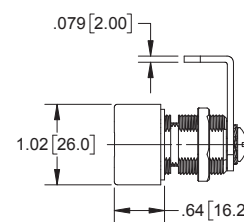
**MOUNTING DIMENSIONS**



**LEFT SIDE VIEW**



**FRONT VIEW**



**RIGHT SIDE VIEW**