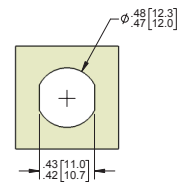
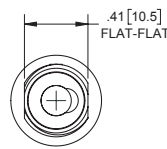
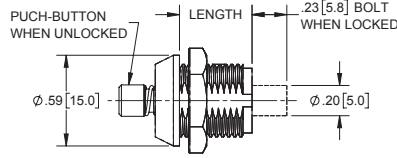
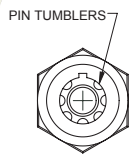


Mini Tubular Push Locks

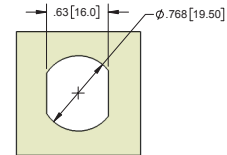
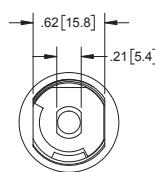
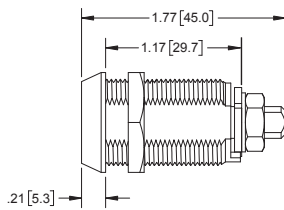
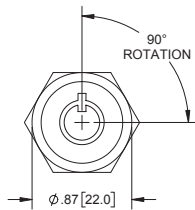


MOUNTING DIMENSIONS

Part Number	Material	Finish	Pin Tumblers	Length
K206CP01	die cast zinc	chrome	4 pins	10.0
K206CP02	die cast zinc	chrome	7 pins	12.0

- ▶ 360° rotation
- ▶ used for ad or display cases

Brass Tubular Cam Lock

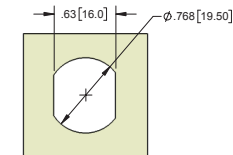
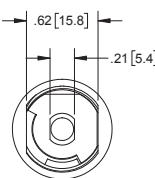
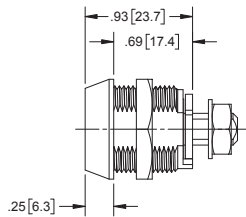
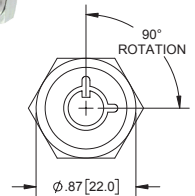


MOUNTING DIMENSIONS

Part Number	Material	Finish	Key Code
K03PCP04	brass	chrome plated	K1161

- ▶ includes (2) steel, nickel plated ringed keys
- ▶ body nut and cam mounting nut are steel with zinc plated finish
- ▶ key removable in locked position only
- ▶ cam not included, see page 365 for cam selection

Brass Tubular Cam Lock

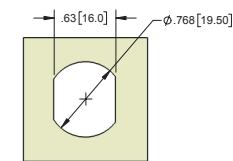
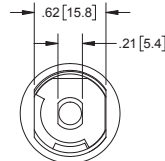
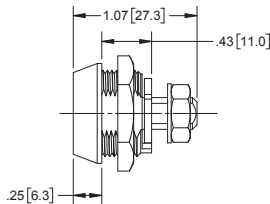
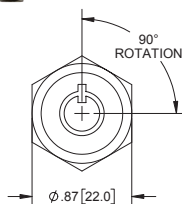


MOUNTING DIMENSIONS

Part Number	Material	Finish	Key Code
K03PCP05	brass	chrome plated	19994

- ▶ includes (2) steel, nickel plated ringed tubular keys
- ▶ body nut and cam mounting nut are steel with zinc plated finish
- ▶ cam not included, see page 365 for cam selection

Brass Tubular Cam Lock



MOUNTING DIMENSIONS

Part Number	Material	Finish	Key Code
K03PCP06	brass	chrome plated	1127A

- ▶ includes (2) steel, nickel plated ringed tubular keys
- ▶ body nut and cam mounting nut are steel with zinc plated finish
- ▶ key removable in locked position only
- ▶ short body for limited spaces
- ▶ cam not included, see page 365 for cam selection