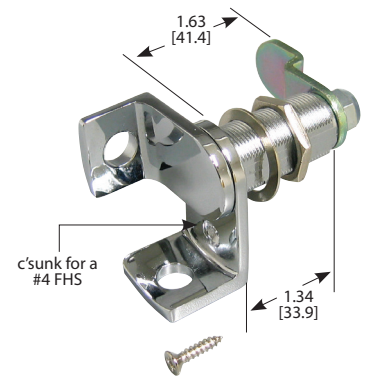
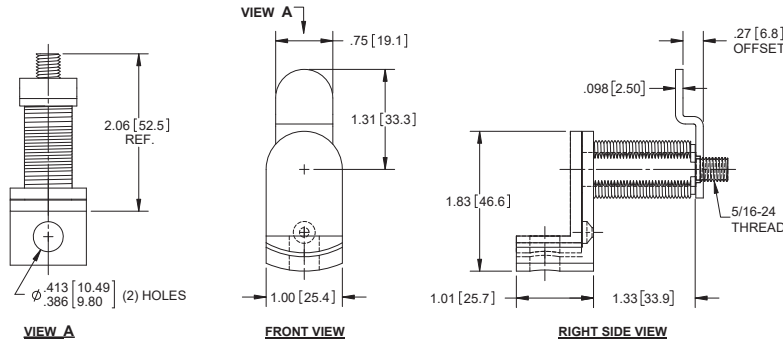


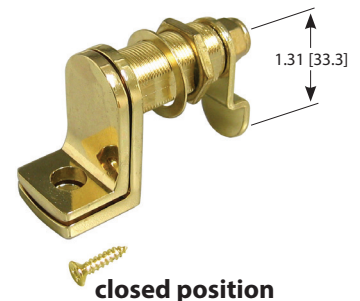
## Padlocking Cylinder Latches

Part Number	Material	Finish
5901	die cast zinc	brass & lacquer
5902	die cast zinc	chrome
5903	die cast zinc	black e-coat

- ▶ accepts up to 3/8" padlock
- ▶ polybagged kit includes:
  - ▶ cylinder
  - ▶ offset cam
  - ▶ nylon lock nut
  - ▶ body nut
  - ▶ body washer



**opened position**



**closed position**

## Padlockable Cam Lock

Part Number	Material	Finish
K040CH50	die cast zinc	chrome plated

- ▶ accepts up to 1/4" padlock
- ▶ includes cam, m4 mounting screw and nut

