



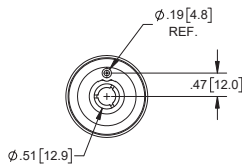
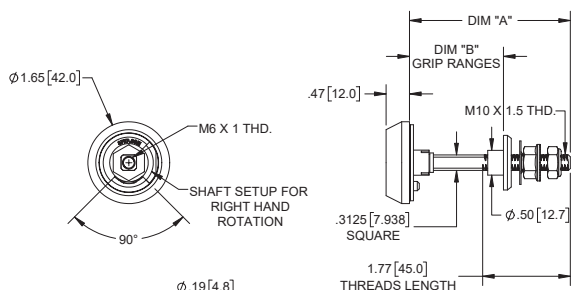
Plastic HVAC L-Handles

Escutcheons/Latch Housing(s)

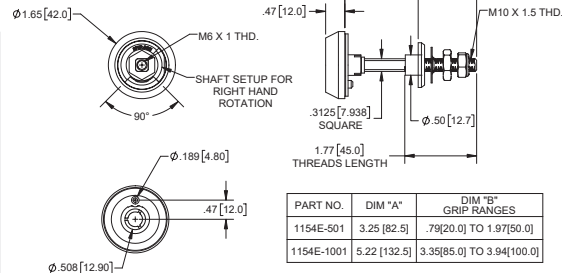
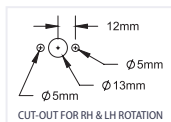
Part Number	Material/Finish	Description	Dim A Shaft Length	Dim B Grip Range
1154E-25	nylon/ textured black	adjustable cam escutcheon	2.26 [57.5]	0.79 [20.0] - 0.98 [25.0]
1154E-50		adjustable cam escutcheon	3.25 [82.5]	0.79 [20.0] - 1.97 [50.0]
1154E-501*		fixed cam escutcheon	3.25 [82.5]	0.79 [20.0] - 1.97 [50.0]
1154E-75		adjustable cam escutcheon	4.23 [107.5]	0.79 [20.0] - 3.07 [78.0]
1154E-100		adjustable cam escutcheon	5.22 [132.5]	3.35 [85.0] - 3.94 [100.0]
1154E-1001*		fixed cam escutcheon	5.22 [132.5]	3.35 [85.0] - 3.94 [100.0]
1154E-Q25 ‡		quarter turn mount adjustable escutcheon	2.26 [57.5]	
1154E-Q50 ‡		quarter turn mount adjustable escutcheon	3.25 [82.5]	



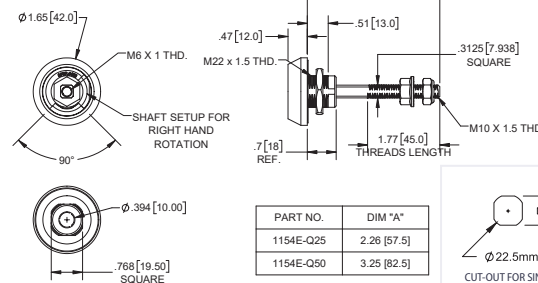
- ▶ for use with 1154 series out-swing or in-swing I-handles
- ▶ for multi-point latching (without use of handle), plastic cover available as **P/N 1154C** (sold separately)
- ▶ assembly includes:
 - (1) grommet
 - (1) push on nut
 - (1) M10 nylock nut
 - (1) serrated-flange nut
- ▶ * assembly includes (1) M10 thin hex nut instead of serrated-flange nut
- ▶ ‡ assembly includes:
 - (1) body nut
 - (1) M10 nylock nut
 - (1) serrated-flange nut



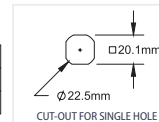
PART NO.	DIM "A"	DIM "B" GRIP RANGES
1154E-25	2.26 [57.5]	.79[20.0] TO .98[25.0]
1154E-50	3.25 [82.5]	.79[20.0] TO 1.97[50.0]
1154E-75	4.23 [107.5]	.79[20.0] TO 3.07[78.0]
1154E-100	5.22 [132.5]	3.35[85.0] TO 3.94[100.0]



PART NO.	DIM "A"	DIM "B" GRIP RANGES
1154E-501	3.25 [82.5]	.79[20.0] TO 1.97[50.0]
1154E-1001	5.22 [132.5]	3.35[85.0] TO 3.94[100.0]



PART NO.	DIM "A"
1154E-Q25	2.26 [57.5]
1154E-Q50	3.25 [82.5]



Plastic HVAC L-Handles Accessories

Inside Handles w/ Red Plastic Grip

Part No.	Description
364-01	In-line handle (90° angle)
364-02	diagonal handle (45° angle)

- ▶ material: steel handle with plastic grip
- ▶ finish: zinc plated handle with red textured grip
- ▶ for use on handles with a .313 [7.94] sq. shaft



8MM Rod Linkage

Part No.	Material / Finish	Description
C23	die cast zinc, steel / zinc plated	multi-point linkage



Safety Catch

Part No.	Material / Finish	Description
C24	steel / zinc plated	inside safety catch



Additional Components

Description	Page No.
cam rollers	60
cams	134
rods & rod guides	135