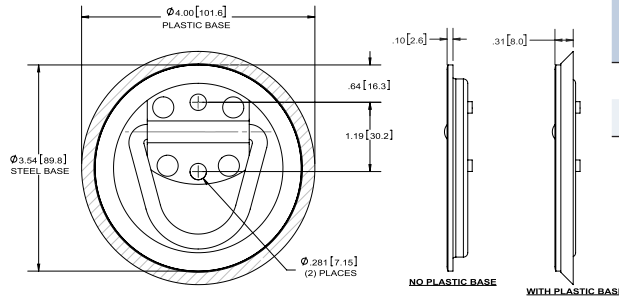


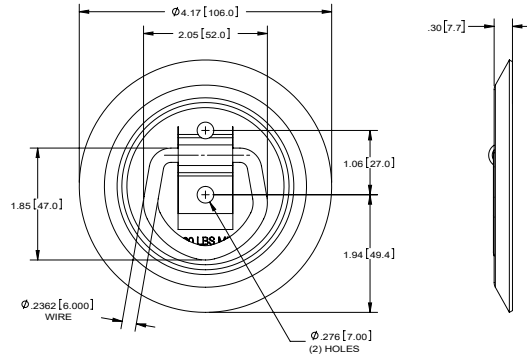
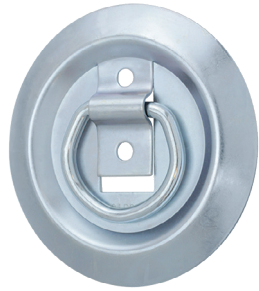
### Tie Down Rings



Part Number	Material	Finish	Plastic Base	WLL (lbs.)	UBS (lbs.)
<b>858</b>	steel	zinc plated	yes	400	1,200
<b>858-01</b>	steel	zinc plated	no	400	1,200

- ▶ black plastic base is not included with part no. **858-01**
- ▶ Ø.250 [6.35] steel D-ring
- ▶ .063 [1.60] thick base and D-ring holder

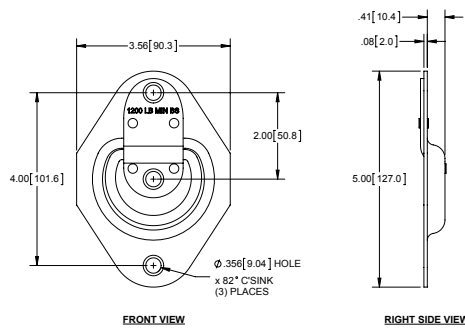
### Tie Down Ring



Part Number	Material	Finish	WLL (lbs.)	UBS (lbs.)
<b>863ZN</b>	steel	zinc plated	400	1,200

- ▶ .059 [1.50] thick base

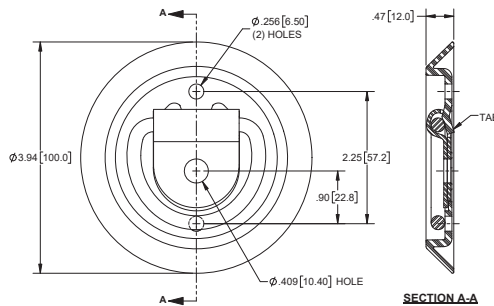
### Tie Down Ring



Part Number	Material	Finish	WLL (lbs.)	UBS (lbs.)
<b>856</b>	steel	zinc plated	400	1,200

- ▶ Ø.236 [6.00] wire
- ▶ .079 [2.00] thick base and wire holder

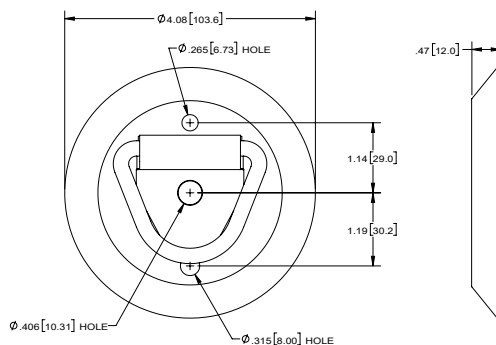
### Tie Down Ring



Part Number	Material	Finish	WLL (lbs.)	UBS (lbs.)
<b>858-05</b>	steel	zinc plated	400	1,200

- ▶ black plastic base
- ▶ tab on plastic base provides a snug fit that prevents ring from rattling and holds it in place at any position
- ▶ Ø.236 [6.00] steel D-ring
- ▶ .059 [1.50] thick D-ring holder

### Tie Down Ring



Part Number	Material	Finish	WLL (lbs.)	UBS (lbs.)
<b>857</b>	steel/plastic	zinc plated	600	1,800

- ▶ black plastic base
- ▶ Ø.250 [6.35] steel D-ring
- ▶ .059 [1.50] thick D-ring holder
- ▶ D-ring assembly can be purchased separately as part number **857-01**