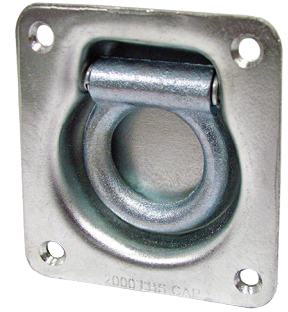
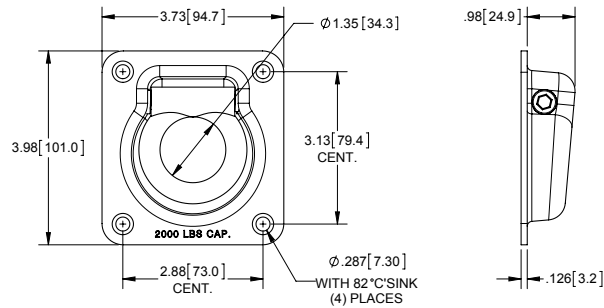


### Tie Down Rings

Part Number	Material	Finish	WLL (lbs.)	UBS (lbs.)
891ZN	steel	zinc plated	650	2,000
891SS	304SS	mill	650	2,000
891M	steel	mill	650	2,000

- ▶ Ø.433 [11.00] thick ring
- ▶ .126 [3.20] thick base



### Tie Down Rings

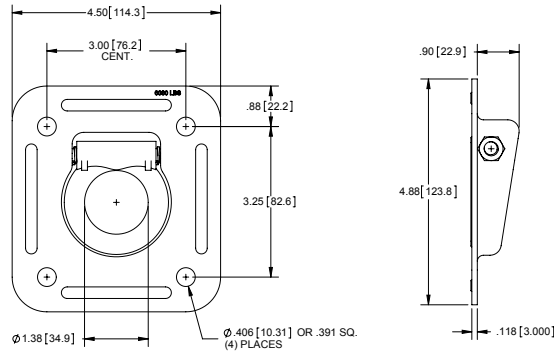
Part Number	Material	Finish	Holes	WLL (lbs.)	UBS (lbs.)
890ZN	steel	zinc plated	Ø.406 [10.31]	2,000	6,000
890ZN-01	steel	zinc plated	.391 [9.93] sq.	2,000	6,000
890SS-01	304SS	passivated	.391 [9.93] sq.	2,000	6,000

- ▶ Ø.433 [11.00] thick ring
- ▶ .118 [3.00] thick base

#### Back Support Plate

**Part No. 890BP**  
back support for:  
**890ZN and 890ZN-01**

- ▶ material: steel
- ▶ finish: zinc plated
- ▶ size: 6.50 [165.1] sq. x .098 [2.50] thick



round holes  
part no. **890ZN**

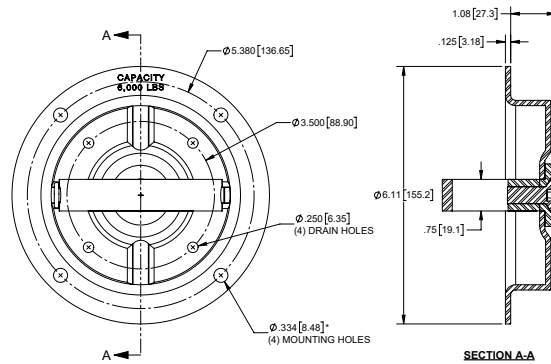


sq. holes  
part no. **890ZN-01**

### Tie Down Rings

Part Number	Material	Finish	WLL (lbs.)	UBS (lbs.)
895	steel	zinc plated	2,000	6,000
895SS	304SS	electropolished	2,000	6,000
895M*	steel	mill (pan only)	2,000	6,000
895M-01*	steel	mill	2,000	6,000

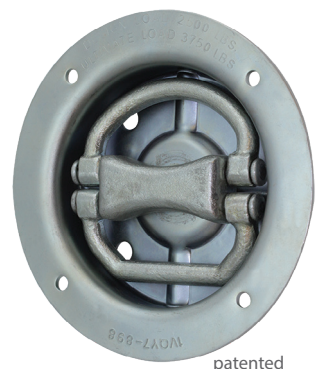
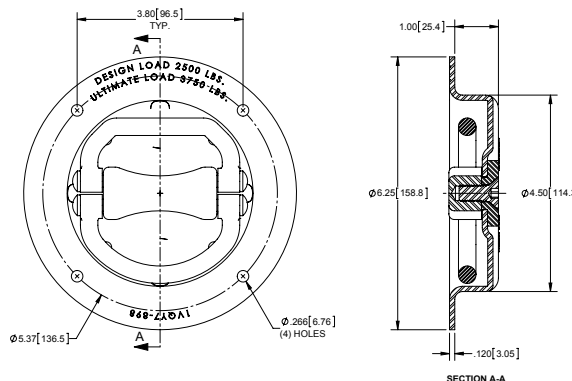
- ▶ .250 [6.35] thick ring
- ▶ .125 [3.18] thick base
- ▶ \*parts no. **895M** and **895M-01** do not have mounting holes



### PAT. Tie Down Ring

Part Number	Material	Finish	WLL (lbs.)	UBS (lbs.)
898	steel	zinc plated	1,250	3,750

- ▶ Ø.400 [10.16] thick forged rings
- ▶ .120 [3.05] thick base



patented