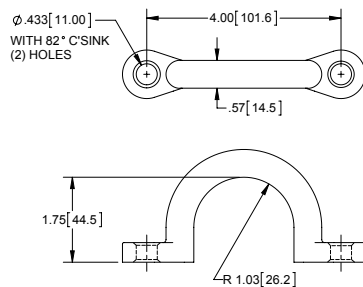
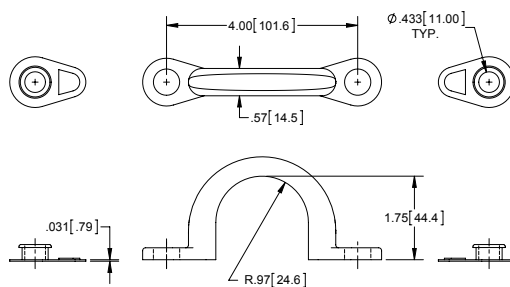


Tie Off Rings



Part Number	Material	Finish	WLL (lbs.)	UBS (lbs.)
880	aluminum casting	tumbled	500	1,500
880-01	aluminum casting	polished	500	1,500

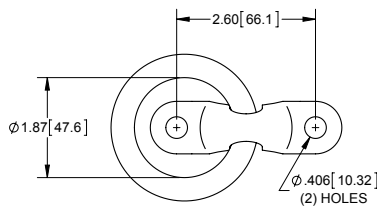
Tie Off Rings with Groove



Part Number	Material	Finish	WLL (lbs.)	UBS (lbs.)
880SS-02	304SS	tumbled	3,500	10,500
880SS*	304SS	tumbled	3,500	10,500

- ▶ part no. **880SS-02** is shipped with (2) rubber gaskets
- ▶ * part no. **880SS** does not include gaskets

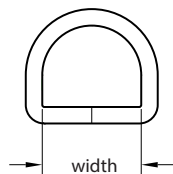
Two Piece Tie Off Ring



Part Number	Material	Finish	WLL (lbs.)	UBS (lbs.)
885-01	aluminum	polished	350	1,100

- ▶ $\phi .438 [11.13]$ ring thickness

D-Rings



Part Number	Wire Dia.	Width	Material	Finish
D127	.236 [6.00]	1.50 [38.1]	steel	nickel
D200	.236 [6.00]	2.17 [55.1]	steel	nickel
D200SS	.236 [6.00]	2.13 [54.1]	304SS	electropolished