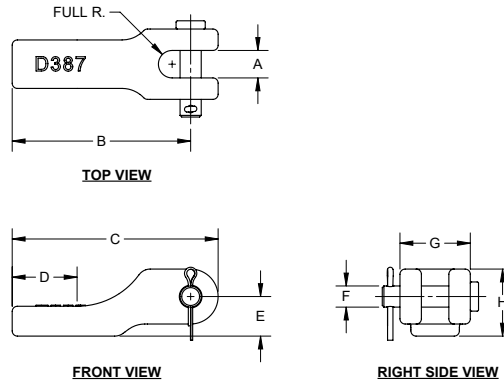


## Forged Chain Retainers

Part No.	Chain Size	Ultimate Breaking Strength (UBS)	A	B	C	D	E	F	G	H
<b>D387</b>	5/16 [8.0]	10,000 lb.	.50 [12.7]	3.25 [82.6]	3.75 [95.3]	1.18 [30.0]	.72 [18.3]	Ø.39 [9.9]	1.28 [32.5]	1.22 [31.0]
<b>D388</b>	3/8 [9.5]	25,000 lb.	.60 [15.2]	3.59 [91.2]	4.16 [105.7]	1.30 [33.0]	.75 [19.1]	Ø.47 [11.9]	1.57 [39.9]	1.32 [33.5]
<b>D388-01</b>	1/2 [12.7]	32,000 lb.	.73 [18.5]	3.82 [97.2]	4.50 [114.3]	1.30 [33.0]	.90 [23.2]	Ø.70 [17.0]	1.77 [45.0]	1.59 [40.3]

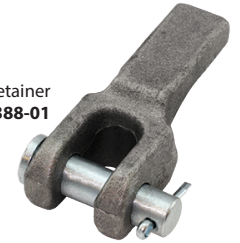
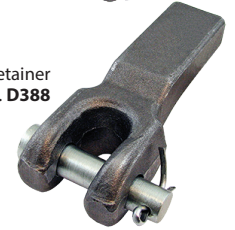
- ▶ aids for replacement of damaged or worn safety chains quickly and easily
- ▶ finish: mill with zinc plated components
- ▶ see pg. 379 for working load limit information



5/16" retainer  
part no. **D387**

3/8" retainer  
part no. **D388**

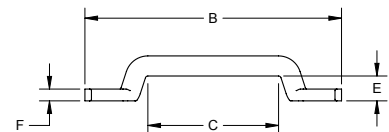
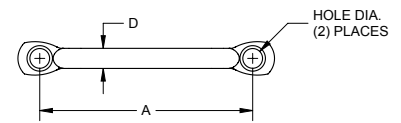
1/2" retainer  
part no. **D388-01**



## Footman Loops

Part Number	Material	Finish	Dim. A	Dim. B	Dim. C	Dim. D	Dim. E	Dim. F	Hole Dia.
<b>9901ZN</b>	steel	zinc plated	2.13 [54.0]	2.67 [67.8]	1.12 [28.4]	Ø.28 [7.0]	.25 [6.4]	.15 [3.7]	Ø.20 [5.2] x 82° c'sink
<b>9901SS</b>	304SS	passivated	2.13 [54.0]	2.67 [67.8]	1.12 [28.4]	Ø.28 [7.0]	.25 [6.4]	.15 [3.7]	Ø.20 [5.2] x 82° c'sink
<b>9901BK</b>	steel	black e-coated	2.13 [54.0]	2.67 [67.8]	1.12 [28.4]	Ø.28 [7.0]	.25 [6.4]	.15 [3.7]	Ø.20 [5.2] x 82° c'sink
<b>9902ZN</b>	steel	zinc plated	2.24 [57.0]	2.79 [70.8]	1.37 [34.8]	Ø.28 [7.0]	.25 [6.4]	.15 [3.7]	Ø.24 [6.2] x 82° c'sink
<b>9902SS</b>	304SS	passivated	2.24 [57.0]	2.79 [70.8]	1.37 [34.8]	Ø.28 [7.0]	.25 [6.4]	.15 [3.7]	Ø.24 [6.2] x 82° c'sink
<b>9903ZN</b>	steel	zinc plated	2.63 [66.8]	3.17 [80.5]	1.61 [41.0]	Ø.28 [7.0]	.31 [7.8]	.15 [3.7]	Ø.24 [6.2] x 82° c'sink
<b>9903SS</b>	304SS	passivated	2.63 [66.8]	3.17 [80.5]	1.61 [41.0]	Ø.28 [7.0]	.31 [7.8]	.15 [3.7]	Ø.24 [6.2] x 82° c'sink
<b>9904ZN</b>	steel	zinc plated	3.09 [78.5]	3.64 [92.5]	2.09 [53.0]	Ø.28 [7.0]	.31 [7.8]	.16 [4.0]	Ø.24 [6.2] x 82° c'sink
<b>9904SS</b>	304SS	passivated	3.09 [78.5]	3.64 [92.5]	2.09 [53.0]	Ø.28 [7.0]	.31 [7.8]	.16 [4.0]	Ø.24 [6.2] x 82° c'sink

- ▶ not intended for load bearing applications



## Large Footman Loop

Part Number	Material	Finish
<b>9905ZN</b>	steel	zinc plated

- ▶ not intended for load bearing applications

