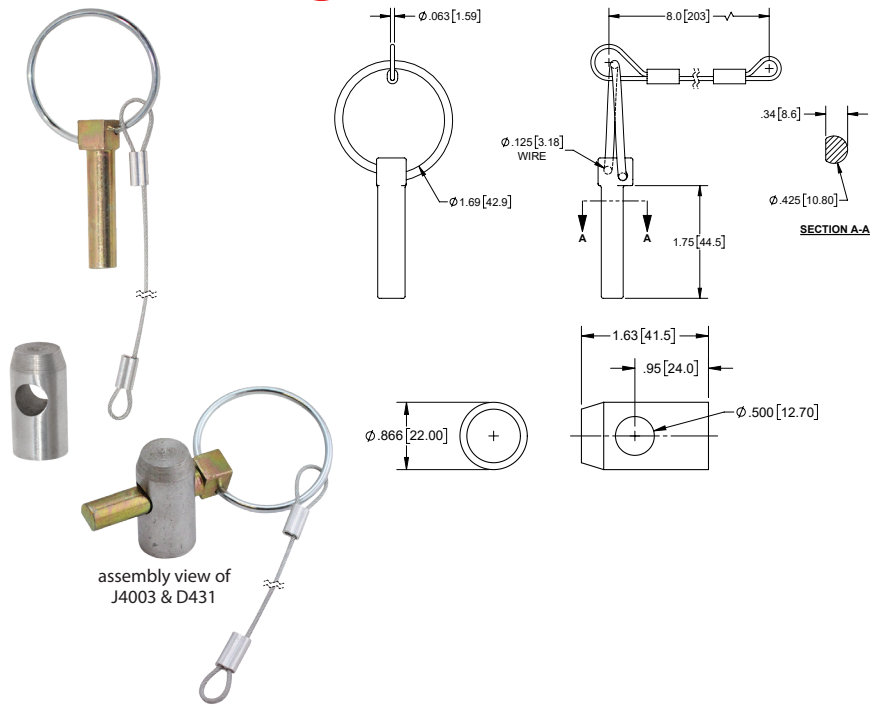


Lynch Pin Assembly NEW



Part No.	Components	Material	Finish
J4003	ring	steel	zinc plated
	pin	steel	yellow zinc plated
	cable	steel	vinyl coating

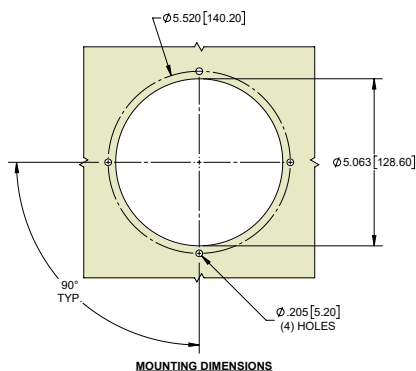
Lynch Pin Receiver Post

Part Number	Material	Finish
D431	steel	mill

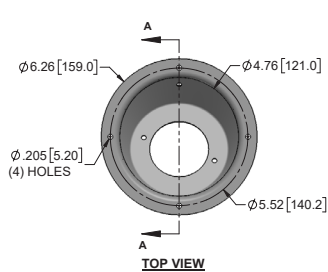
Fuel Fill Dishes



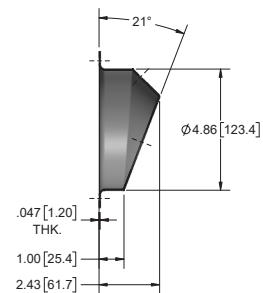
Part No. J2033



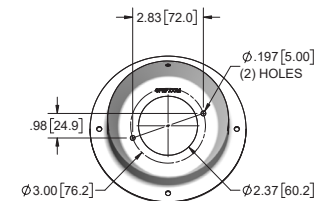
Part No.	Material	Finish	Description
J2033	steel	zinc plated	21° forming
J2033SS	304SS	hand polished (top flange only)	21° forming
J2034	steel	zinc plated	42° forming
J2034SS	304SS	hand polished (top flange only)	42° forming



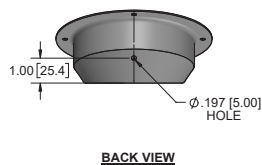
TOP VIEW



SECTION A-A

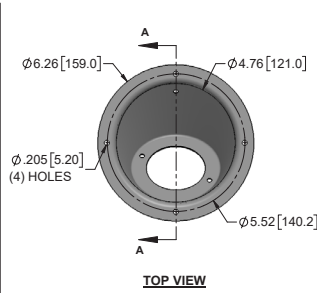


BOTTOM VIEW

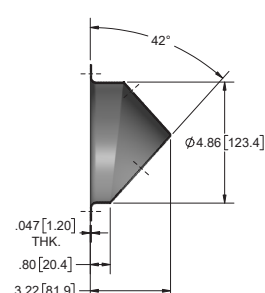


BACK VIEW

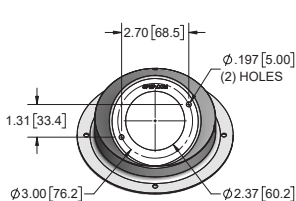
P/N J2033 & J2033SS



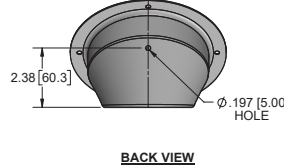
TOP VIEW



SECTION A-A



BOTTOM VIEW



BACK VIEW

P/N J2034 & J2034SS