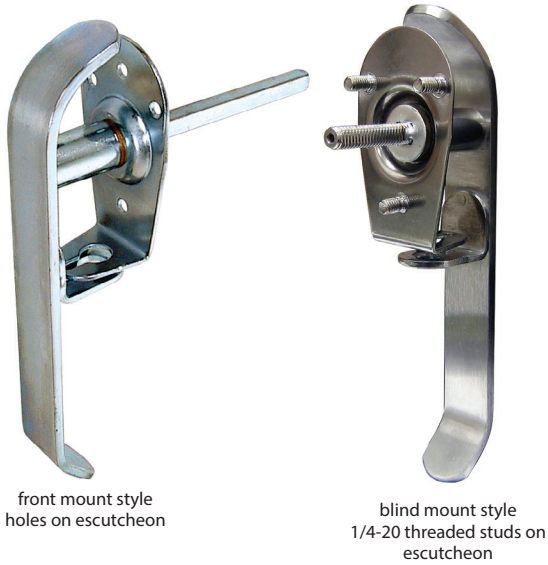
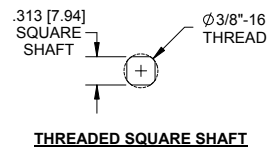
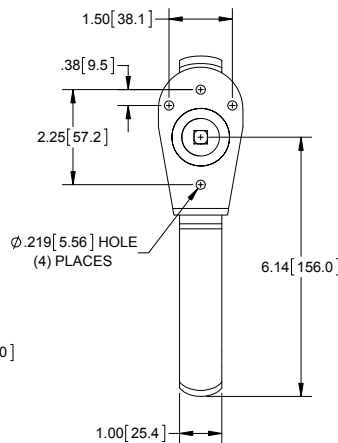
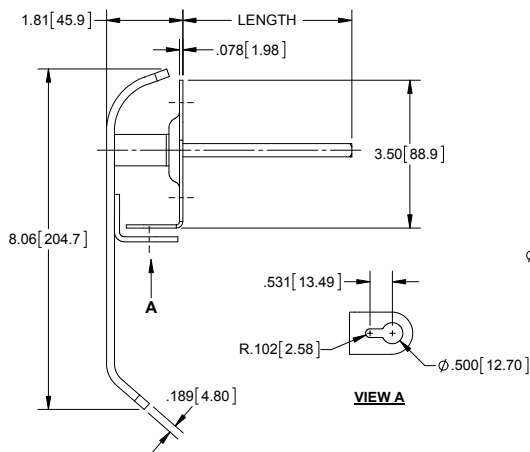


Stamped Padlocking L-Handles



Part Number	Material	Finish	Shaft Length	Shaft Style	Shaft Size	Mounting
300B	steel	brushed & zinc plated	4.00 [101.6]	non threaded	.313 [7.94]	front
NEW 300B-10	steel	brushed & zinc plated	5.50 [139.7]	non threaded	.313 [7.94]	front
300CH	steel	chrome plated	4.00 [101.6]	non threaded	.313 [7.94]	front
305P	304SS	polished	4.00 [101.6]	non threaded	.313 [7.94]	front
305B	304SS	brushed	4.00 [101.6]	non threaded	.313 [7.94]	front
305BTHD	304SS	brushed	4.00 [101.6]	3/8 - 16 thread	.313 [7.94]	front
305BTHD01	304SS	brushed	1.50 [38.1]	3/8 - 16 thread	.313 [7.94]	blind
505B	304SS	brushed	4.00 [101.6]	non threaded	.500 [12.70]	front

- ▶ 360° bidirectional rotation design
- ▶ keyhole allows you to use a standard padlock or dual lock bracket, enabling the use of 2 padlocks with different key codes. See part no. **X125-01** below
- ▶ gasket available separately, part no. **300G-01**



Dual Lock Brackets



Part Number	Description	Material	finish
X125-01	for cast handles	304SS	deburred

- ▶ fits handles with special keyhole cut-out

