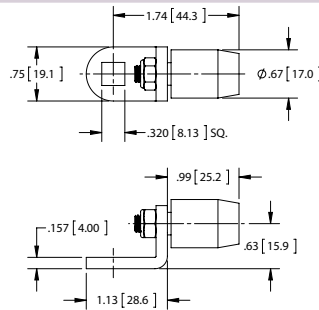


Roller Cams

Part Number	Material	Finish	Roller Mounting
699	steel/plastic	zinc/natural	nut
699-50	steel/plastic	zinc/natural	riveted

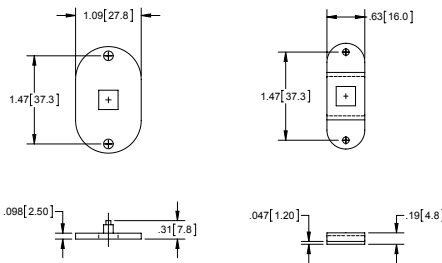
▶ for .313 [7.94] sq. shaft



Two Point Cam and Cover Kit

Part Number	Material	Finish
C4-01	steel	zinc plated

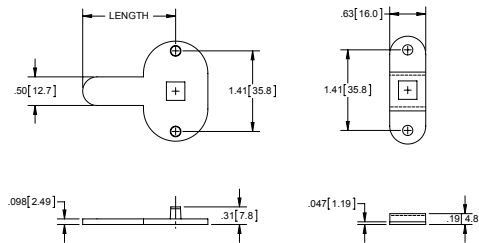
- ▶ for .313 [7.94] sq. shaft
- ▶ use with part no. 723 rods, pg. 63
- ▶ cam and cover kits are shipped separately in bulk



Three Point Cam and Cover Kit

Part Number	Length	Material	Finish
C8-01	2.50 [63.5]	steel	zinc plated
C8-02	2.13 [54.1]	steel	zinc plated

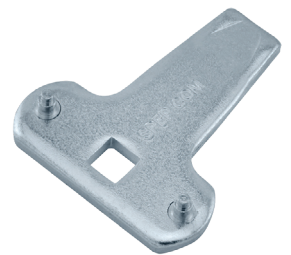
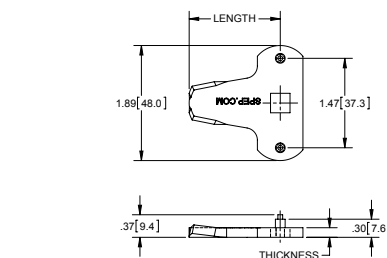
- ▶ for .313 [7.94] sq. shaft
- ▶ use with part no. 723 rods, pg. 63
- ▶ cam and cover kits are shipped separately in bulk



Three Point Cams

Part Number	Length	Thickness	Material	Finish
C21	1.50 [38.1]	.157 [4.00]	steel	zinc plated
C22	2.25 [57.2]	.189 [4.80]	steel	zinc plated

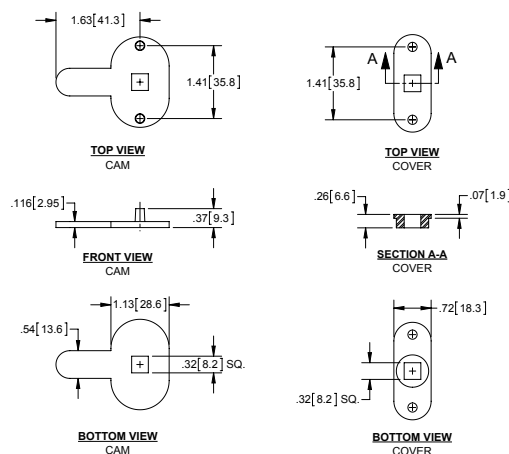
- ▶ for .313 [7.94] sq. shaft
- ▶ use with part no. 723 rods, pg. 63
- ▶ cam cover available, part no. C5



Three Point Cam Kit

Part Number	Material	Finish
C11-01	die cast zinc	zinc plated

- ▶ for .313 [7.94] sq. shaft
- ▶ use with part no. 723 rods, pg. 63



refer to pg. 47 for more Compatible Accessories for Square Shafted Handles