

Accessories (Sold Separately)

Standard Paddle Handle Gasket

Part No.	Material	Finish
450G	neoprene	black



Inside Release Ring

Part No.	Material	Finish
4ZN	steel	zinc plated
4SS	316SS	passivated



▶ for junior paddle handles only

Inside Release Knob

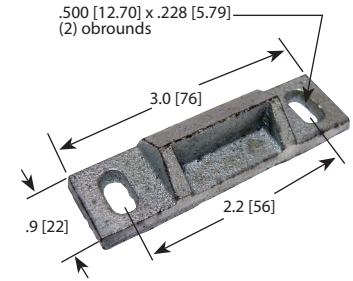
Part No.	Material	Finish
4PL	plastic	zinc plated



▶ for junior and standard paddle handles

Striker

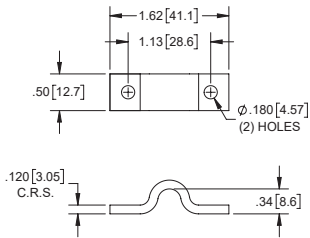
Part No.	Material	Finish
40ZN	sand cast steel	zinc plated



▶ for junior and standard paddle handles

Guide for a Ø5/16 [8.0] Connecting Rod

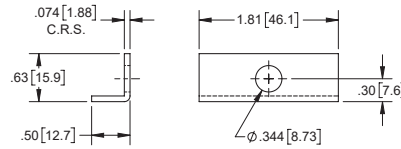
Part No.	Material	Finish
724	steel	zinc plated



▶ use with rods at the bottom of this page

Guide for a Ø5/16 [8.0] Connecting Rod

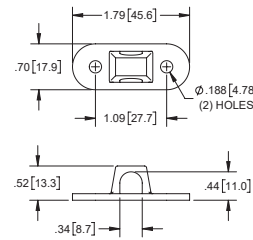
Part No.	Material	Finish
725	steel	zinc plated



▶ use with rods at the bottom of this page

Guide for a Ø5/16 [8.0] Connecting Rod

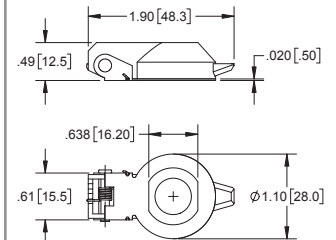
Part No.	Material	Finish
726	nylon	white



▶ use with rods at the bottom of this page

Cam Lock Dust Cover

Part No.	Material	Finish
K220	die cast zinc	chrome



▶ use with rods at the bottom of this page

Cotter Pin

Part No.	Description
XF12-01	3/32 dia. x 1/2 long



- ▶ steel, zinc plated
- ▶ used to connect rods with folding T-handles

Clevis Pin

Part No.	Description
XF13-01	1/4 dia. x 1/2 long



- ▶ steel, zinc plated
- ▶ used to connect rods with folding T-handles

Ø5/16 [8.0] Connecting Rods

Part No.	Material	Finish	Length	Description
723	steel	zinc plated	48.00 [1219.2]	1 flat end
NEW 723-36.00	steel	zinc plated	36.00 [914.4]	1 flat end
NEW 723-DS48	steel	zinc plated	48.00 [1219.2]	2 flat ends

▶ custom lengths can be made to your specification

