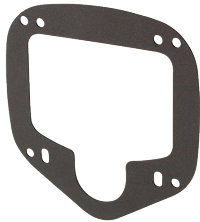


Hole Mounted, Padlocking, Compression Bi-Directional Folding T-Handles

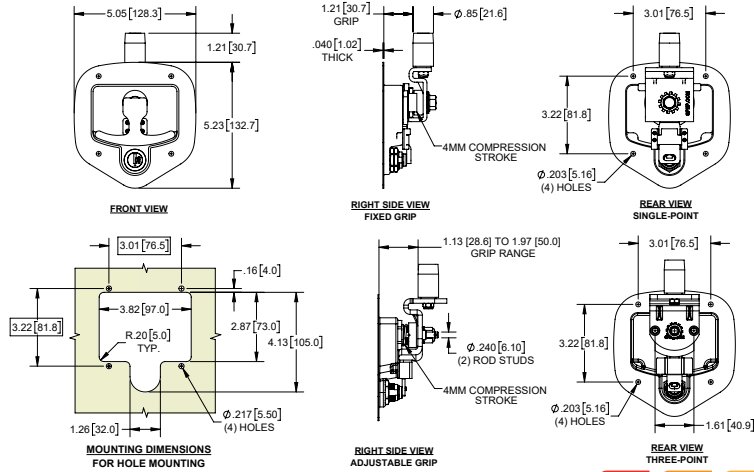


Part Number	Key Code	Rotation	Pan Material / Finish	Handle Material / Finish	Cam Type	Grip
499BK-01	CH751	bi-directional	steel / black powder coated	die cast zinc / black powder coated	4mm compression stroke	1.21 [30.75]
499CH-01			steel / black powder coated	die cast zinc / chrome plated		
499SS-01			304SS / electropolished	die cast zinc / chrome plated		
499BK-10			steel / black powder coated	die cast zinc / black powder coated	4mm compression stroke with studs for 3pt latching	1.13 [28.6] to 1.97 [50.0]
499CH-10			steel / black powder coated	die cast zinc / chrome plated		
499SS-10			304SS / electropolished	die cast zinc / chrome plated		

- ▶ gasket available separately as part no. 496G-01
- ▶ recessed lock
- ▶ accepts up to 7/16" padlock
- ▶ see pg. 63 (part no. 723) for rods and accessories
- ▶ see pg. 70 for spare locks (LCEM-series & LCDB-series)



part no. 496G-01



Blind-Mounted, Padlocking, Compression Bi-Directional Folding T-Handles



Part Number	Key Code	Rotation	Pan Material / Finish	Handle Material / Finish	Cam Type	Grip
499BK-15	CH751	bi-directional	steel / black powder coated	die cast zinc / black powder coated	4mm compression stroke with studs for 3pt latching	1.13 [28.6] to 1.97 [50.0]
499CH-15			steel / black powder coated	die cast zinc / chrome plated		
499SS-15			304SS / electropolished	die cast zinc / chrome plated		
499BK-55	CH501	bi-directional	steel / black powder coated	die cast zinc / black powder coated	4mm compression stroke with studs for 3pt latching	1.13 [28.6] to 1.97 [50.0]
499CH-55			steel / black powder coated	die cast zinc / chrome plated		
499SS-55			304SS / electropolished	die cast zinc / chrome plated		

- ▶ poron gasket available separately as part no. 496G-01
- ▶ recessed lock
- ▶ accepts up to 7/16" padlock
- ▶ see pg. 63 (part no. 723) for rods and accessories
- ▶ see pg. 70 for spare locks (LCEM-series & LCDB-series)

