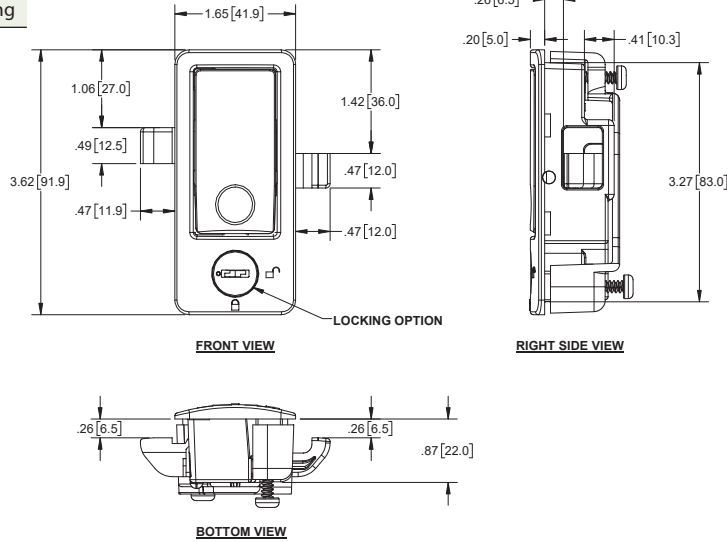


UV Double Pawl Slam Latches

Part No.	Material	Finish	Key Code
1126LKP	plastic	textured black	CH751
1126P	plastic	textured black	non-locking

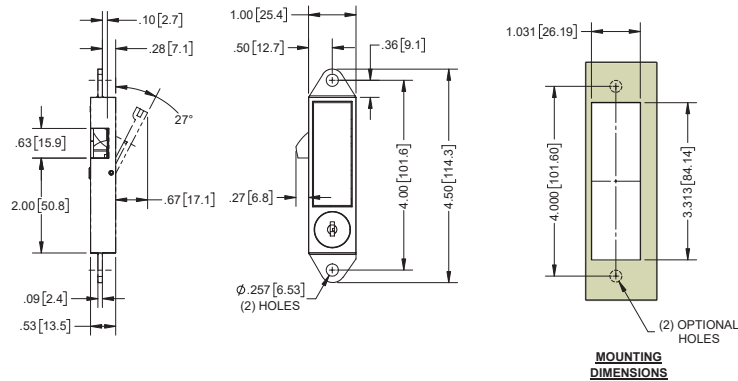
- ▶ locking latch includes:
 - ▶ (2) ringed, brass, nickel plated keys
 - ▶ mounting bracket & screws
- ▶ key locking latch will slam closed while in locked position
- ▶ may be used in either left hand or right hand orientation



Push to Close Latch

Part Number	Material	Finish
1140	die cast zinc	textured chrome

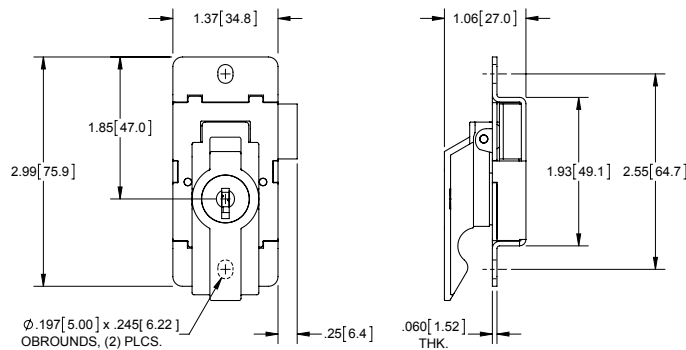
- ▶ includes (1) brass key



Panel Board Latch

Part Number	Key Code (2 Keys)	Left or Right	Finish
GE1LH	CAT 60	left	zinc plated
GE1RH	CAT 60	right	zinc plated
GE1LH1	SP 60	left	zinc plated
GE1RH1	SP 60	right	zinc plated

- ▶ lever and bolt are die cast zinc
- ▶ case is formed steel
- ▶ maximum intended panel thickness is .120 [3.05]
- ▶ key removable in locked or unlocked position



LEFT HAND SHOWN

